



ValkDouble | ValkTriple | ValkQuattro

Datasheet **ValkDouble** | **ValkTriple** | **ValkQuattro**

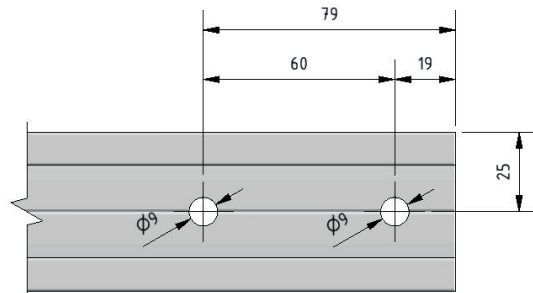
Solar ramp

- By smart panel configuration up to 100% more panels per roof.
- Suitable for expansion roofs, garage boxes or apartment buildings.
- Available in three variants: ValkDouble (2 panels), ValkTriple (3 panels) and ValkQuattro (4 panels).
- Height: ValkDouble approx. 502 mm, ValkTriple approx. 678 mm, ValkQuattro approx. 860 mm.

Extension kit

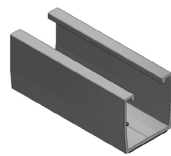
To accommodate panels from 1065 to 1100 mm at the ValkDouble, ValkTriple or ValkQuattro, these should be extended. For this you need an extension kit for every solar ramp.

Hole pattern

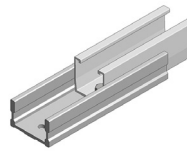


- In the case of the already existing aluminum profiles of the solar ramp, be sure to drill two holes (Ø 9 mm) per profile at the end of the profile in accordance with the above hole pattern to fit the extension set.

Articles



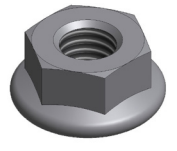
Aluminium profile



Aluminium coupling piece



SS tap bolt



SS flange nut

Advice pitch

	ValkDouble	ValkTriple	ValkQuattro
Advice pitch (angle inclination 14,5°)	3300 mm	5000 mm	6700 mm
Distance between rows	1120 mm	1870 mm	2610 mm
Dimensions of systems (mm, l x w x h)	2180 x 1650 x 540	3130 x 1650 x 720	4090 x 1650 x 900

Article overview

ValkDouble ValkTriple ValkQuattro	
Article number	Description
757008	ValkDouble - 2 panels landscape - 10°
757010	ValkTriple - 3 panels landscape - 10°
757012	ValkQuattro - 4 panels landscape - 10°
757052*	Extension kit solar ramp
* For panels width 1065 - 1100 mm	

CONTACT DETAILS | DEVELOPER AND PRODUCER OF SOLAR MOUNTING SYSTEMS