

Flat roof system closed II

OUR SOLUTION FOR THE SOUTH-FACING DIRECTION

Our Flat Roof Closed II system – the perfect solution for the south-facing elevation of your modules on flat roofs with a pitch of up to 5°. We had our system tested by Wacker engineers in a boundary layer wind tunnel with high wind peaks. The result confirms our quality which has proven itself for years: with our flat-roof system, you are choosing unparalleled security and stability.

The closed II system convinces with its quick and easy installation, consists of only a handful of components and click-in system parts – the roof is not punctured during installation. The optimised aerodynamics required little to no ballasting with stones – perfect for your flat roof. This is made possible by our wind deflector which is installed in an overlapping fashion on the closed II elevation and fixed to the supports and rails. This increases the overall stability and ensures optimised load transfer through its attachment to the base trough.

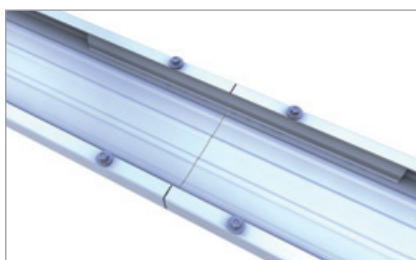
The wide base trough has rounded edges and is pre-assembled with a continuous separation layer or individual pads for cross drainage, as desired. With a suitable cover and cable holder, it can also act as the cable channel for the cables on the base trough. Per default, this mounting system can support loads of up to 2.4 kN/m²; and, as necessary, can be expanded to support loads of up to 4.8 kN/m².

YOUR BENEFITS

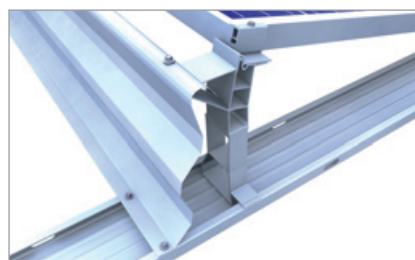
- Secure, stable and quick to install
- Wind-tunnel tested aerodynamics
- No penetration of the roof membrane
- Minimal ballasting
- Load redistribution across the wind deflector and base troughs
- For roof pitches of up to 5°
- Roof edge clearance of only 0.5 m
- Wide base trough with rounded edges
- Ballast trough for large-format stones
- Only three clamps for all frame heights
- Simple, Eurocode-compliant layout with our Solar-Planit online tool



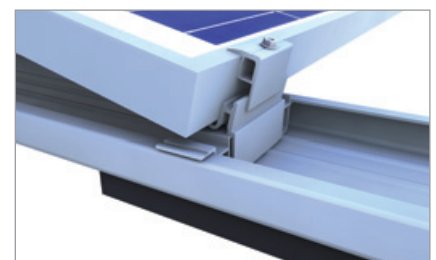
Type Approved
Regular
Production
Surveillance
www.tuv.com
ID 1111212187



Base trough extension



Wind deflector and module support



Module clamp on the long frame side base foot



BASIC COMPONENTS

Base trough



item no. 218005

Connector set
base trough



item no. 218036

Aluminium edge protector
Self-adhesive



item no. 218084

Flat roof mounting screw



item no. 218033

Base foot



item no. 218091

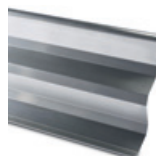
SOUTH-FACING VARIANT

Module support



item no. 218092

Ballast redistribution



item no. 218097

Module attachment



item no. 218103



item no. 218095



item no. 218100

BayWa r.e. Solar Energy Systems GmbH | Eisenbahnstraße 150 | D-72072 Tübingen

Phone +49 7071 98987-0, Fax +49 7071 98987-10, solarenergysystems@baywa-re.com
www.baywa-re.com, solarenergysystems.baywa-re.com, novotegra.baywa-re.com

