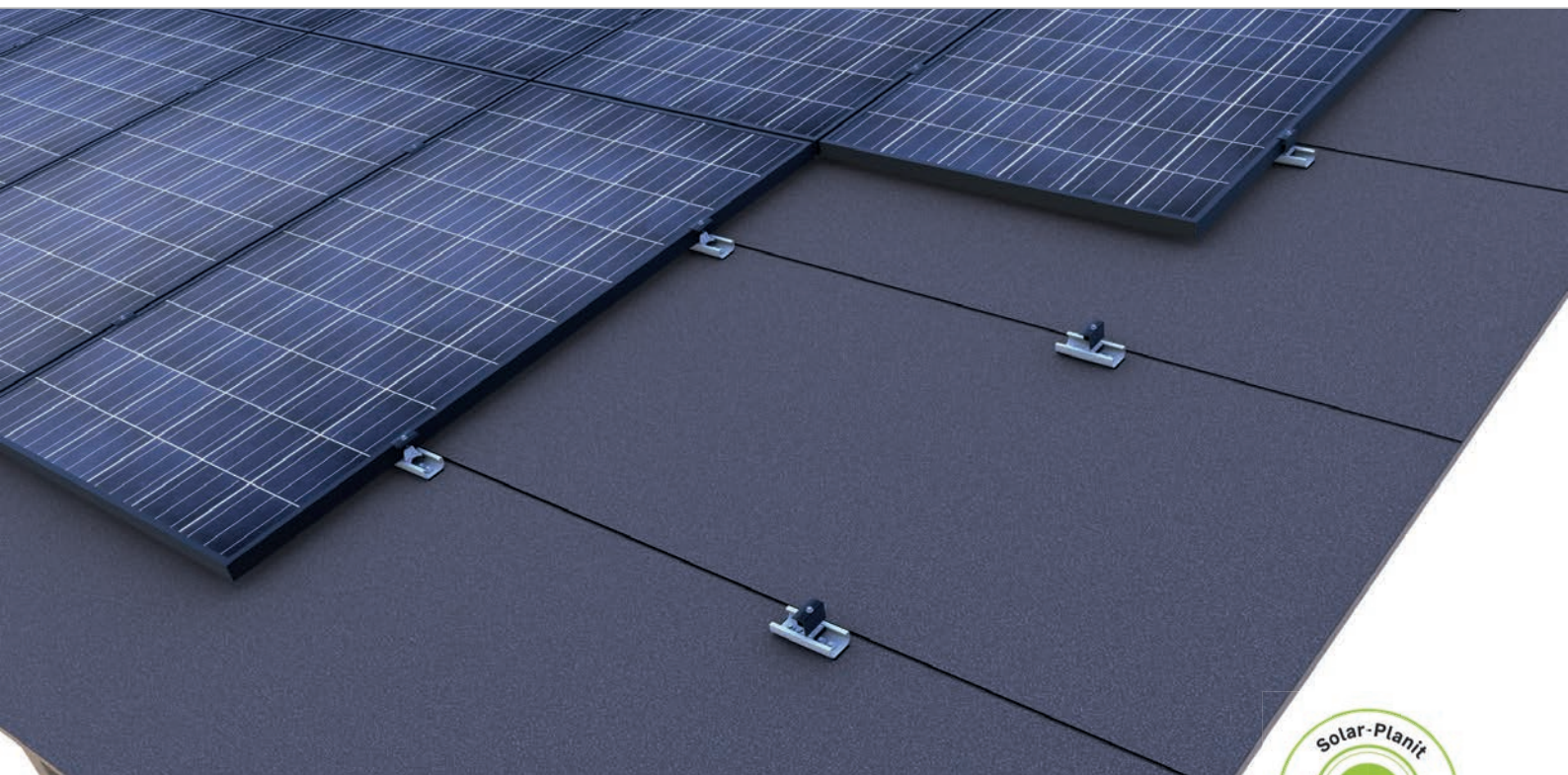
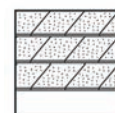


Bitumen roof | clamping system

Clamping system with direct fixing and modules installed in portrait or landscape



Mounting in landscape or in portrait – direct fixing on bitumen

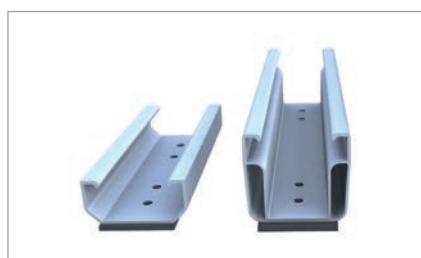
- mounting modules in portrait or in landscape
- module clamping in the optimum clamping range
- reduced logistical effort
- quick and efficient mounting from above

produkt variants

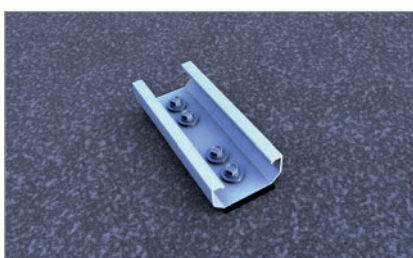
- short rail C24 for the yield-optimised installation or the project business
- short rail C47 for excellent module rear ventilation with extra space to the roof covering

Your benefits

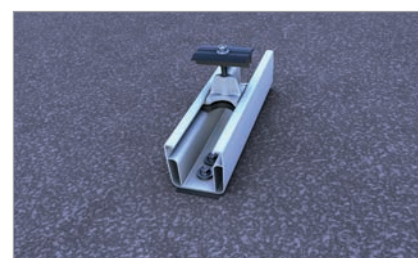
- only a handful of components, entirely preassembled
- low material costs and easy handling
- Direct fixing with building authority-approved mounting screws
- only one mounting tool necessary



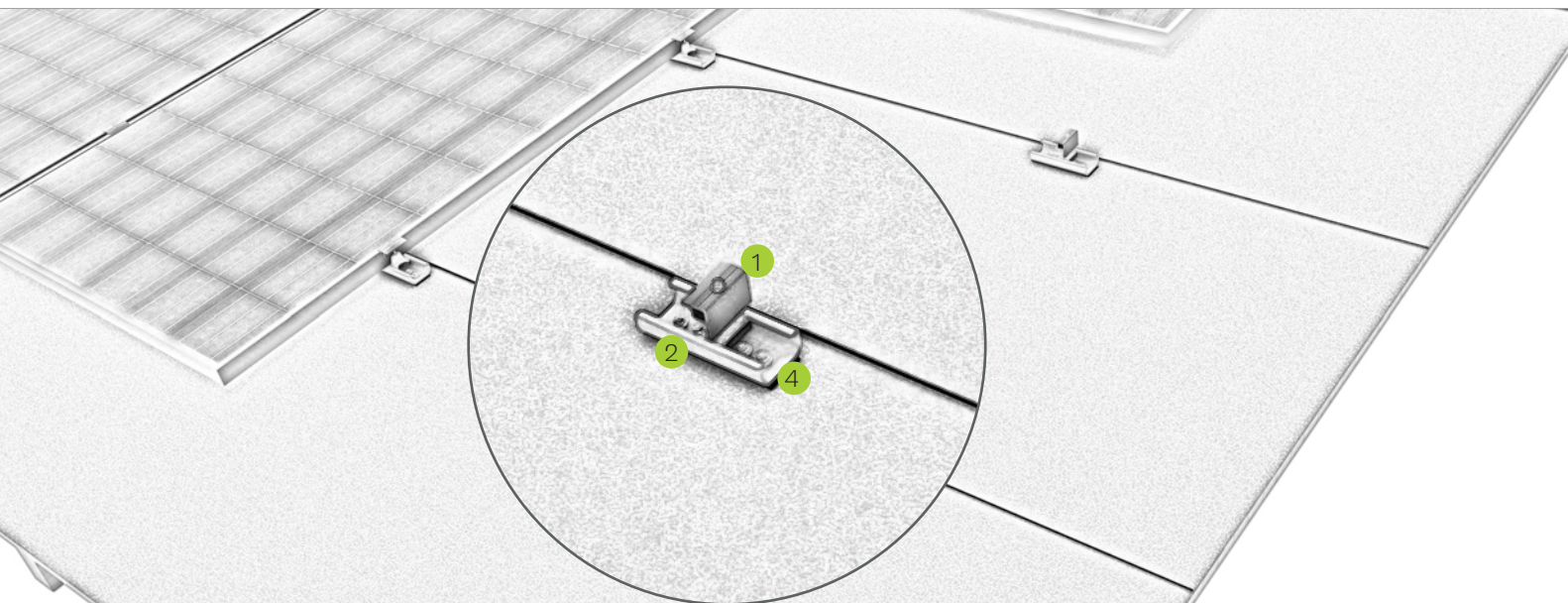
Short rails C24 and C47



short rail C24 with four mounting screws for high wind loads

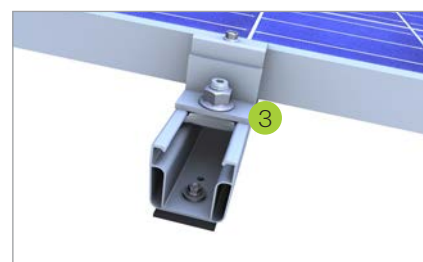


Middle clamp in short rail C47

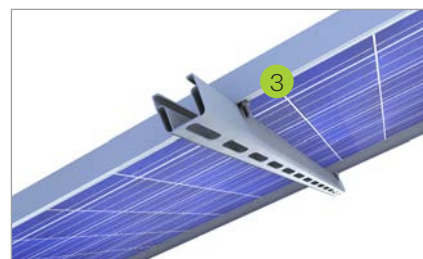


Pic Designation

- | | |
|---|--|
| 1 | Middle and end clamp <ul style="list-style-type: none"> • for frame heights of 30-42 mm and 43-52 mm • available in blank and black anodized |
| 2 | Short rail <ul style="list-style-type: none"> • material-saving fixation • entirely pre-assembled with EPDM-sealing and perforations |
| 3 | Slip guard <ul style="list-style-type: none"> • for fixing modules mounted in landscape and portrait • mounting aid for the lowest module row |
| 4 | Mounting screw <ul style="list-style-type: none"> • building authority-approved • individual calculation of the fasteners |



Slip guard for fixing modules in landscape



Slip guard for fixing modules in portrait

Mounting video



novotegra GmbH
Eisenbahnstraße 150 | 72072 Tübingen | Deutschland
Tel. +49 7071 98987-0, info@novotegra.com
www.novotegra.com

Irrtümer und Änderungen vorbehalten.
Stand: Juni 2021 / TP