

What are you  
waiting for?

**CONTACT US**

info@solitek.eu

# SoliTek Presents...The "SOLID WALL"

A VENTILATED PHOTOVOLTAIC FACADE

In PV, the transition of the decade is a movement from centralized projects to building- specific solutions, more practical and beautiful than ever. **Photovoltaic power generation is now a part of architecture.**

The SoliTek SOLID Wall is a BAPV system designed to be compatible with 9/10 of building walls, including sandwich panels, concrete, bricks, blocks, and others. It provides modern buildings with all that they require - durability, aesthetics, and ability to generate electricity.

Most ventilated facades are used for insulation and protection of buildings, while a photovoltaic facade will help modern buildings reach energy efficiency goals and create a stream of revenues for 30 years to come. The exterior is made out of glass solar panels giving it a unique, futuristic beauty, rare in today's cities.

## Key Features

- Solar Panel **Efficiency >90% after 30 years**
- Easy to install, service and maintain
- Possibility to thermally insulate and protect the building
- Adaptation for uneven walls
- Resistance to even extreme environmental conditions



Dust & Sand  
Resistance



Ammonia  
Resistance



Fire Class A



Self-Cleaning

## Bill of Materials

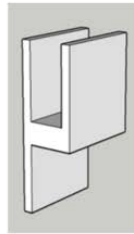
1. A standard L profile from façade solutions



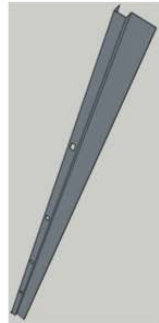
2. A standard metal T profile as guiding rail



3. A SAPA hook



4. A specially designed metal profile



5. A frameless Glass-Glass PV module



6. A lot of screws



## Mounting Process

### STEP 1

Metal L profiles are fixed to the wall

### STEP 2

Guiding vertical rails are fixed to L profiles

### STEP 3

Hooks are fixed to guiding rails

### STEP 4

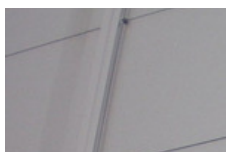
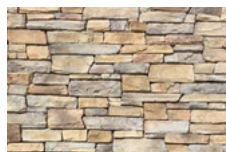
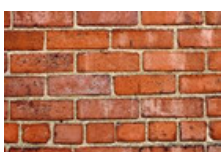
Modules with glued profiles are hung on hooks



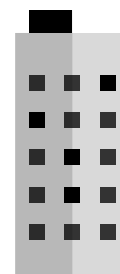
- Modules are attached in portrait or landscape orientation
- Applicable on all types of facades
- Modules can be replaced one at a time
- Estimated price - up to 200 €/m<sup>2</sup>

Release date - 2018 Q1

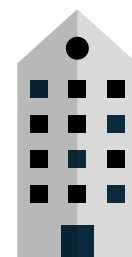
## Fits All Wall Types



Industrial



Commercial



Residential

**The System adapts extremely well to uneven walls** for a flat, beautiful external surface.

Suitable wall surface: brick, stonework, concrete, block, sandwich plate, and others

# 5 CUSTOMER BENEFITS

## OF CHOOSING THE SOLID WALL

### 1. More electricity for the building

SOLID facade can produce 170 W/m<sup>2</sup> @ STC. How many square meters does your facade have?

### 2. Eye-pleasing design, designed to last

Frameless, self-cleaning, always good-looking, SoliTek modules are built to look good for decades. After years of service, the second skin will look as good as the day it was installed.

The facade adjusts to uneven wall surfaces, giving a flat, beautiful external surface.

Available **Poly Blue** or **Mono Black**

### 3. Better thermal insulation

SoliTek "Second Skin" accommodates any thickness of insulation layer, as required. The system is ventilated, thus the insulation material will retain all of its insulating properties in any weather.

### 4. Protection from noise and damage

SoliTek "Second Skin" protects the building walls from external damage and weather effects. SoliTek modules are made from laminated tempered glass, which is very strong and resists even the most extreme environmental conditions: wind, humidity, sand, salt, ammonia and others.

### 5. European product quality and top customer support

SoliTek manufactures both cells and modules using highest quality materials. All products are produced in the EU.

If needed, we are within a 2-hour flight of 95% of our clients in the EU.

What are you  
waiting for?

**CONTACT US**

[info@solitek.eu](mailto:info@solitek.eu)