

The Northern-European Solar Energy Leader

GLASS / GLASS SOLID PRO PANELS



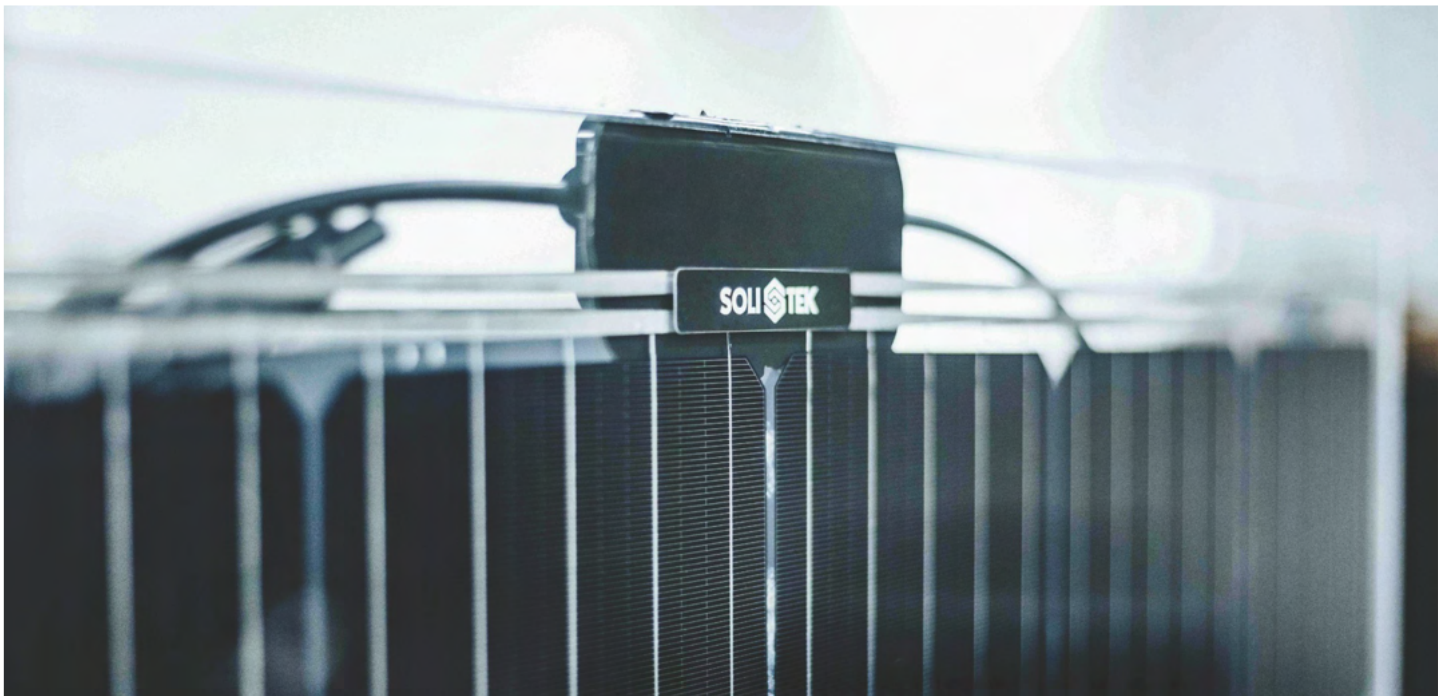
SOLI  **TEK**

It's all about innovation

Manufacturing innovation is SoliTek DNA. In 12 years we have matured to offer the European market an exceptional new products, that will please even the most refined and demanding customer.

At the core of innovative product lie 3 major elements:

- Bifacial monocrystalline solar cells
- Premium tempered glass to glass lamination
- Flawless industrial design





- 1998 ● CD replication business is born
- 2002 ▬ CD factory opened in Vilnius
- 2006 ▬ CD/DVD factory opened in Vilnius
- 2009 ● Solar energy business is born
- 2011 ▬ Blu-ray Disc production line aquired
- 2013 ▬ High-tech center and factory L.I.G.H.T. WING opened in Vilnius
Solar cells and modules production starts
- 2014 ● Eyeglass lenses business is born
- 2015 ▬ RX eyeglass lenses laboratory opened in Vilnius
- 2020 ▬ New Solar modules production line
- 2021 ▬ CD replication business was sold
Construction of Innovation and business canter started
- 2022 ▬ Energy storage production launch

Partners in research

Sertificates:



PRODUCED USING 100%
RENEWABLE ENERGY

Memberships:



Svensk
Solenergi



Programs:



CABRISS

2015.06 - 2018.06
partner



2015.10 - 2018.10
partner



2018.05 - 2022.10
coordinator



2018.06 - 2022.11
partner



2019.10 - 2022.09
partner

Universities:



kauno
technologijos
universitetas



International Solar Energy
Research Center Konstanz



Vilniaus
universitetas

Danmarks
Tekniske
Universitet



Fraunhofer



Ines
INSTITUT NATIONAL
DE L'ENERGIE SOLAIRE



SINTEF

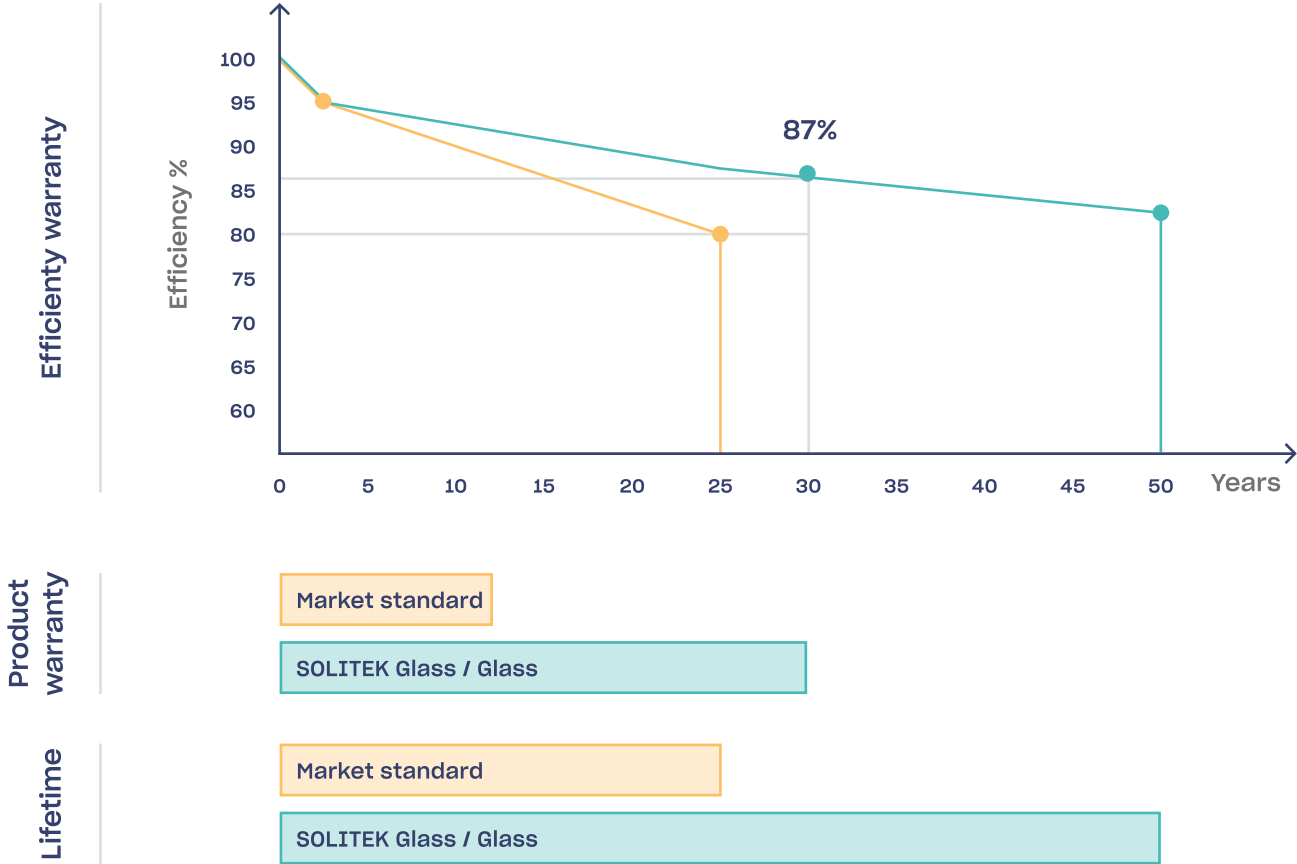
Cradle to Cradle™ certified

The C2C certification **defines 5 components** for circular economy compatible product:

- ① Safe and healthy materials
- ② Eliminate the concept of waste
- ③ Manufactured with clean energy
- ④ Protection of water as a precious resource
- ⑤ Respect human and natural systems



Efficiency is important



Market standard of 12 year product warranty and 25 year efficiency warranty sounds good only on paper. This means that if the panel fails completely after 13 years it is not covered by any warranty.

- 30 years product warranty
- 30 years of 87% efficiency warranty
- 50 years predicted lifetime

Best choice for your wallet. 30 year savings

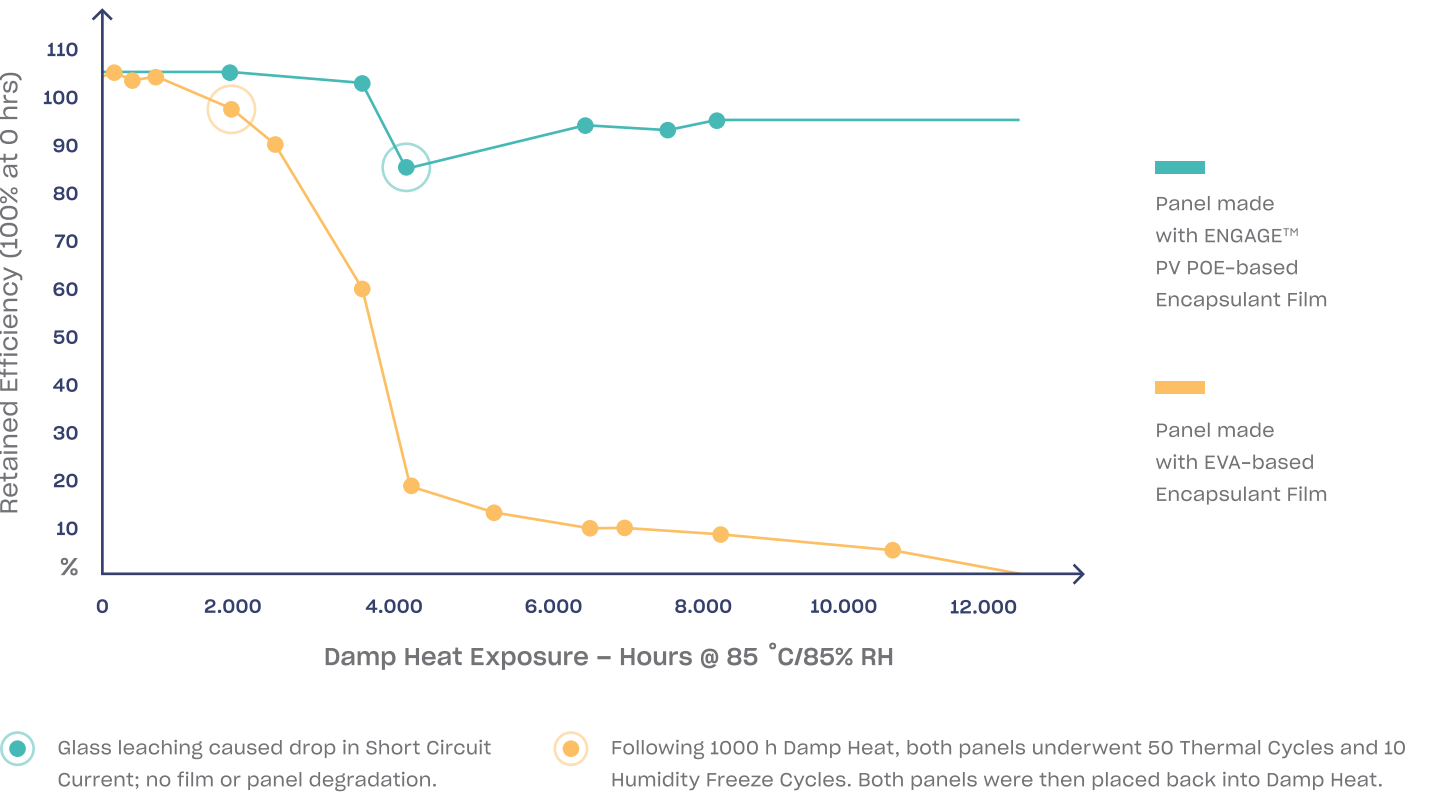
A house with a Solar PV system **increases by ~3% in value and sells 20% faster!** It makes sense to invest in a PV system that lasts!

23% more savings!



* Levelized cost of electricity (LCOE) calculated for a 30 year period.

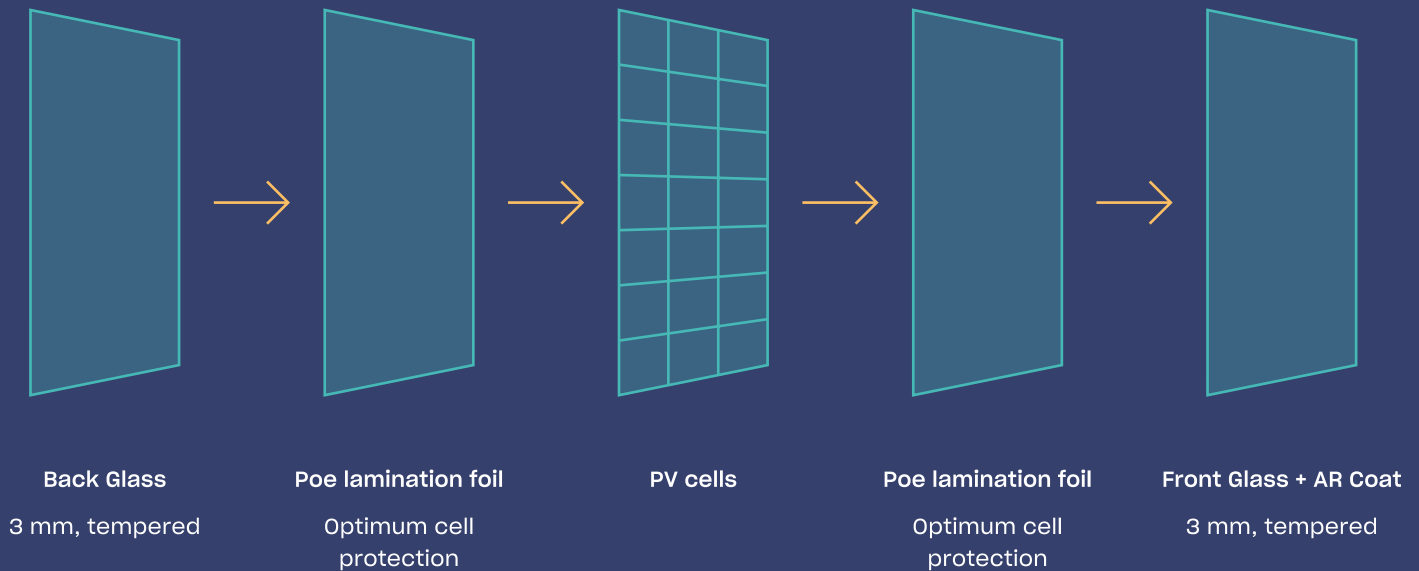
POE is the key



Most manufacturers are using **EVA encapsulants**.
We use **POE**.

	No Acetic acids	100% Waterproof	No browning	Eliminates PID	Maximum Lifetime	Maximum Lifetime
POE	+	+	+	+	+	50 years
EVA	-	-	-	-	-	25 years

Anatomy of Glass Glass

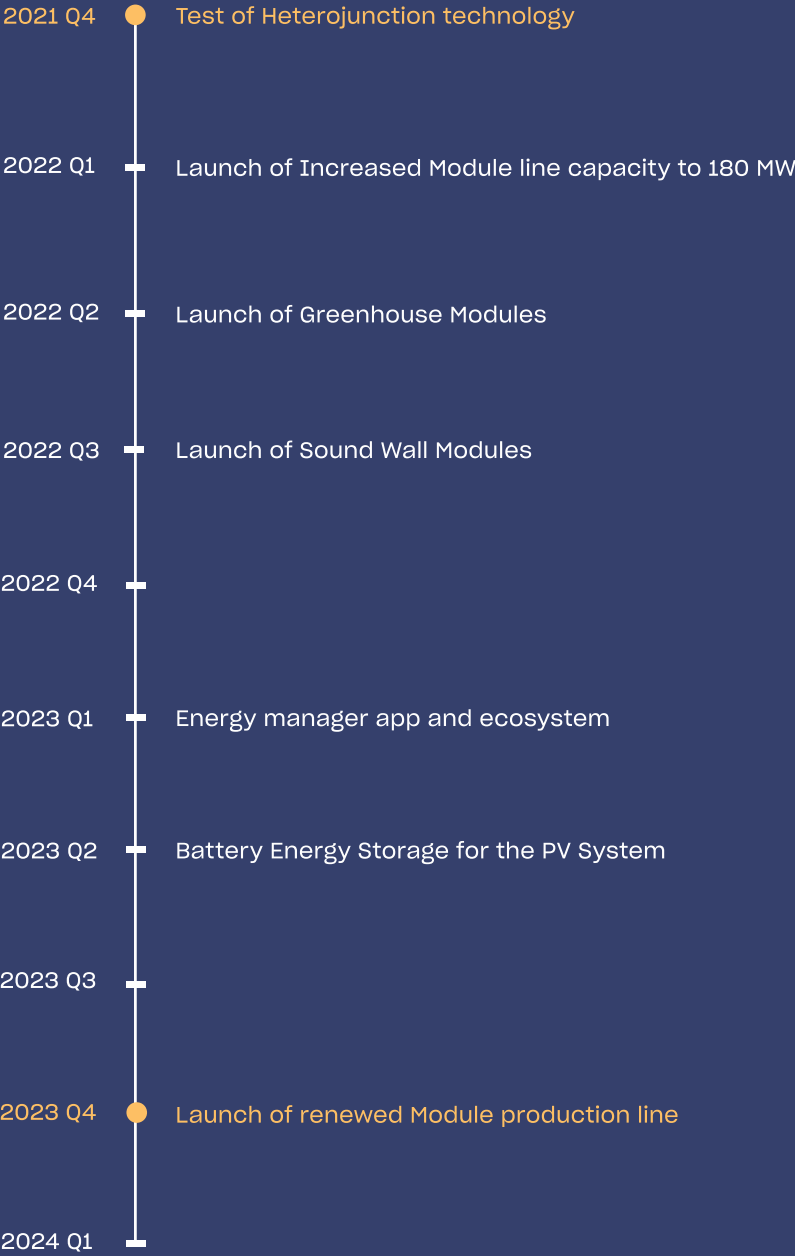


Highest grade materials

Each component plays an important role in the lifetime and performance of our panels. By using only the **highest grade materials** we are able to offer industry-leading product warranties.

No foil - no weak spot

Backsheet is a 0.4 mm plastic sheet used in most of the panels on the market today. By eliminating this we are able to dramatically reduce the rate of the panel failure.



Facts & Figures

SoliTek production, 2021

270 k 

Of solar panels

120 MW 

Total produced capacity

SoliTek production forecast, 2022

500 k 

Of solar panels

180 MW 

Total produced capacity

Our customers

60 %

Of our solar panels is exported to Sweden, Finland and Benelux.

85 %

Of our solar panels are exported to EU markets.

The majority are PV installers, distributors, and project developers in the EU.

Product Portfolio



Glass - Foil Standard
365W/370W



Glass - Foil Standard,
Half-cut cell
365W/375W



SOLID Solrif
355W



BLACKSTAR
(Solid framed)
365W



Glass - Glass
SolidWall



SOLID Bifacial
355W

30 Years
Product warranty

30 Years
Efficiency guarantee

87 %
Power Guarantee
after 30 years

Certifications



Strong from very beginning

Factors causing 88% of panel failures:

- Delamination
- Cell breakage / Microcracks
- Glass breakage
- Backsheet failures
- Frame failures
- Corrosion

Glass / Glass panel is immune to all these factors.

Our panels are indestructible!



Fire class A



Self-cleaning effect



Extreme load resistance



Salt mist resistance



Ammonia resistance



Dust & sand resistance



SOLID Solrif® – solar power plant as a roof

It became possible when we connected our fire class A Glass-Glass solar module SOLID Pro with Solrif® system from Ernst Schweizer AG. **We call this system SOLID Solrif®.**

SOLID Solrif® is valued for its ability to generate electricity, for its simplicity of mounting and design.

House owner saves money twice: at first on roof tiles, and later – on smaller bills for electricity at least for 30 years. All we need to provide the offer is building location and roof dimensions.

Solrif® frame – Ernst Schweizer AG

- 2 decades of development and improvement
- 1920: Company founded
- 1999: Launch of Solrif® frame and mounting system



SOLID Wall - smart and environment friendly solution for facade

Modern outlook of the building

Sustainable and effective

Shows your point of view to environment and global warming issues

Increases the level of energy efficiency of the building

Decreases temperature inside the building on hot season

And generates electricity as well!



SOLID ePIT

With bifacial panels

Wood construction

5.12 kW 

One car

10.24 kW 

Two cars



Ground mounted solar plants

Electricity delivered to
1100 homes

4.6 MW ✓
Turkey

Bifacial solar plant with
horizontal single-axis sun
tracking system

2 MW ✓
Ukraine

3.4 MW ✓
Lithuania



Noise barriers with integrated PV solutions

Saving the construction costs - producing energy - safeguarding the population

- An efficient way of noise prevention by application of PV modules was first demonstrated in Switzerland in 1989.
- Currently the efficiency of the PV and integration modes offers competitive and saving costs solutions.
- Applicable to roads and railways.
- The cooperation among the owner, constructor and PV supplier is the key for the successful development of the project - partnership with the local stakeholders is the key.



Key numbers

Possible noise barriers height

2.5 – 7 m 

PVC modules per kilometer

600 – 2400 

From 0,2 MW to 0,8 MW capacity

Year output

200 – 800 MWh 



Agro-solar power plants - more efficient than traditional agriculture

- A typical agro-solar power plant can produce up to 900 kWh of electricity per year from installed 1 kW;
- Growing peppers, cherry tomatoes in drier and hot areas in the shade of solar modules can achieve much higher yields and significantly reduce the amount of water needed for irrigation;
- When the crops grows in the shade of solar modules, the yield of vegetables and fruits can increase 2–3 times than in usual agriculture;
- The yields matures by 30% faster than under normal conditions;
- The share provided by PV modules ensures cooler surface at daytime and a warmer high time temperature;
- The system also has a smaller vapor pressure deficit. In some cases, water losses can be reduced by as much as even 80%.



Smart combination on environment and energy interests

- It allows the use of agricultural land for both crop production and clean solar electricity generation;
- Smartly installed agro- power plant protects the soil from erosion, equalizes temperature fluctuations;
- It better retains moisture on the soil surface, thus saving water for watering

3 types of agro-solar power plants:

- Sheds and greenhouses;
- Vertical;
- Dynamic.



Proud to be green and innovative

Recognized as the **“Greenest Industrial Building in Europe”** in 2013 by the German Chamber of Commerce. **All production is powered by 100% renewable energy.**

Most of our power demand is satisfied by our own patented **PV-Geothermal heating and cooling system**, which consists of 1 MW of Geothermal power and 150 kW of PV power.

Due to our use of renewable energy use in manufacturing, we save over **400 tons of CO₂ from emission each year.** That's the equivalent of planting **2000 trees every year.**



Energy storage solution

| R&D Battery Equipment

| 2022 Vilnius Lithuania



