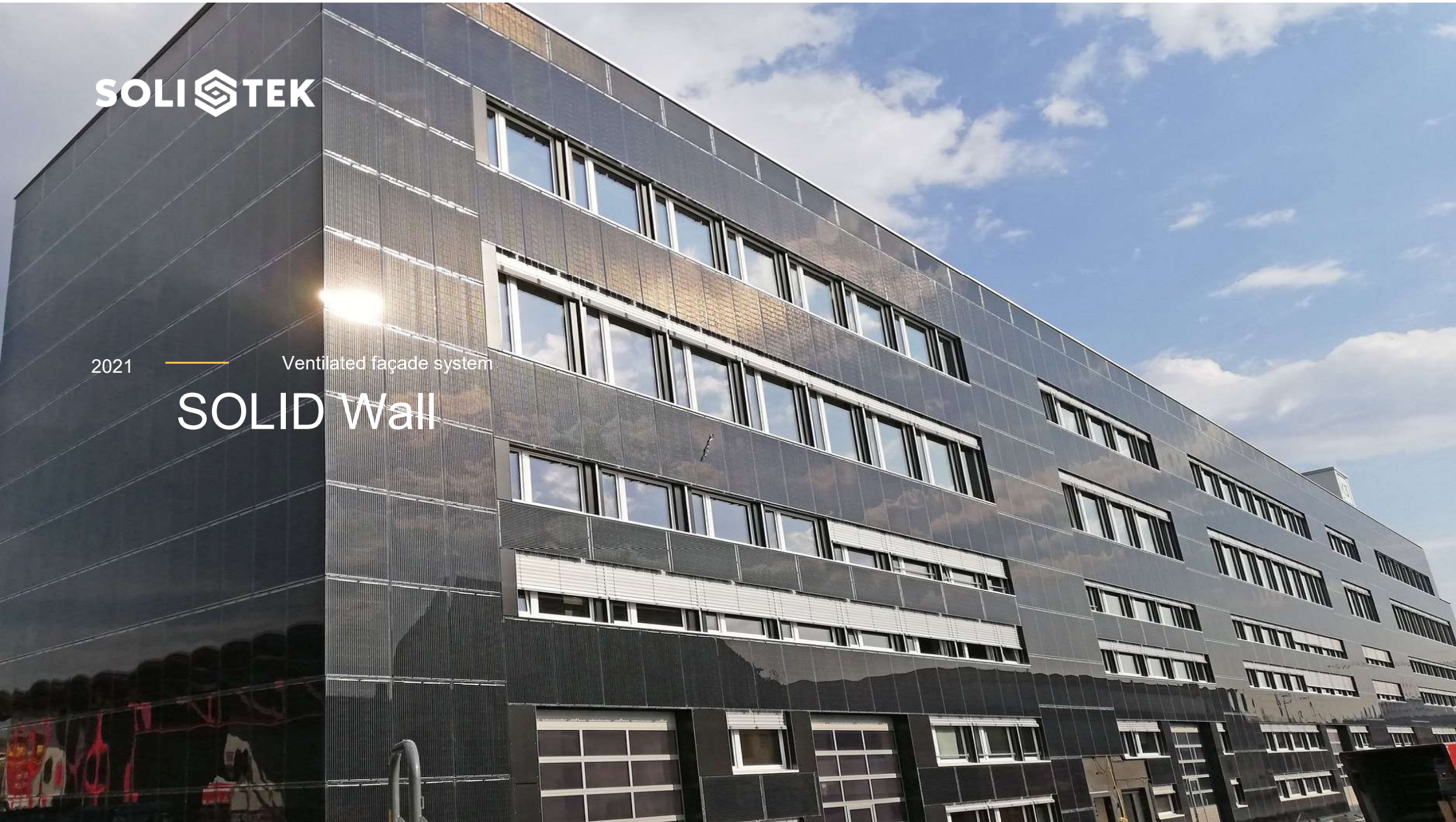


SOLI  TEK

2021

Ventilated façade system

SOLID Wall



SOLID Wall – smart and environment friendly solution for facades

- SOLID Wall is ventilated façade system which combines standard façade mounting components with SOLID Pro frameless module. Most of the system accessories are preassembled, thus, the process of installation is plain and simple and fast as well.

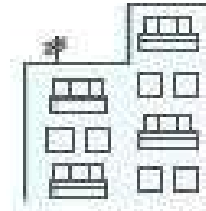


Solid Wall applications

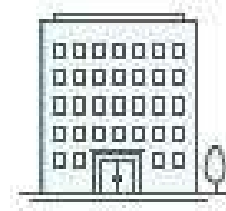
Solid Wall fits to various types of walls.

The system can change even uneven walls to a flat, beautiful external glass wall. Frameless, self-cleaning, shining, Solid Wall façade will look the same for a decades.

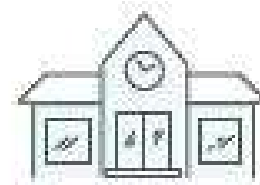
So it is very attractive façade solution for various types of buildings. Old or brand new one, small or big – Solid Wall will make it look different.



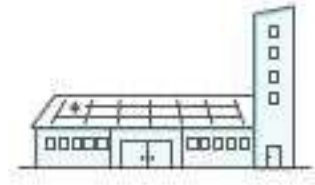
Apartment
building



Office
building



Public
building

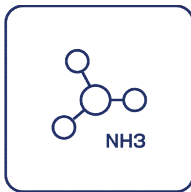


Commercial
building

Solar panels from SoliTek Glass – Glass



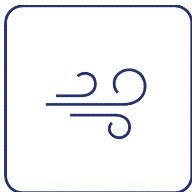
**Extreme load
resistance**



**Ammonia
resistance**



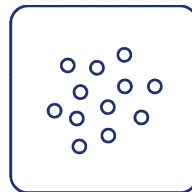
Self-cleaning effect



**Dust & Sand
resistance**



Fire class A



**Salt mist
resistance**



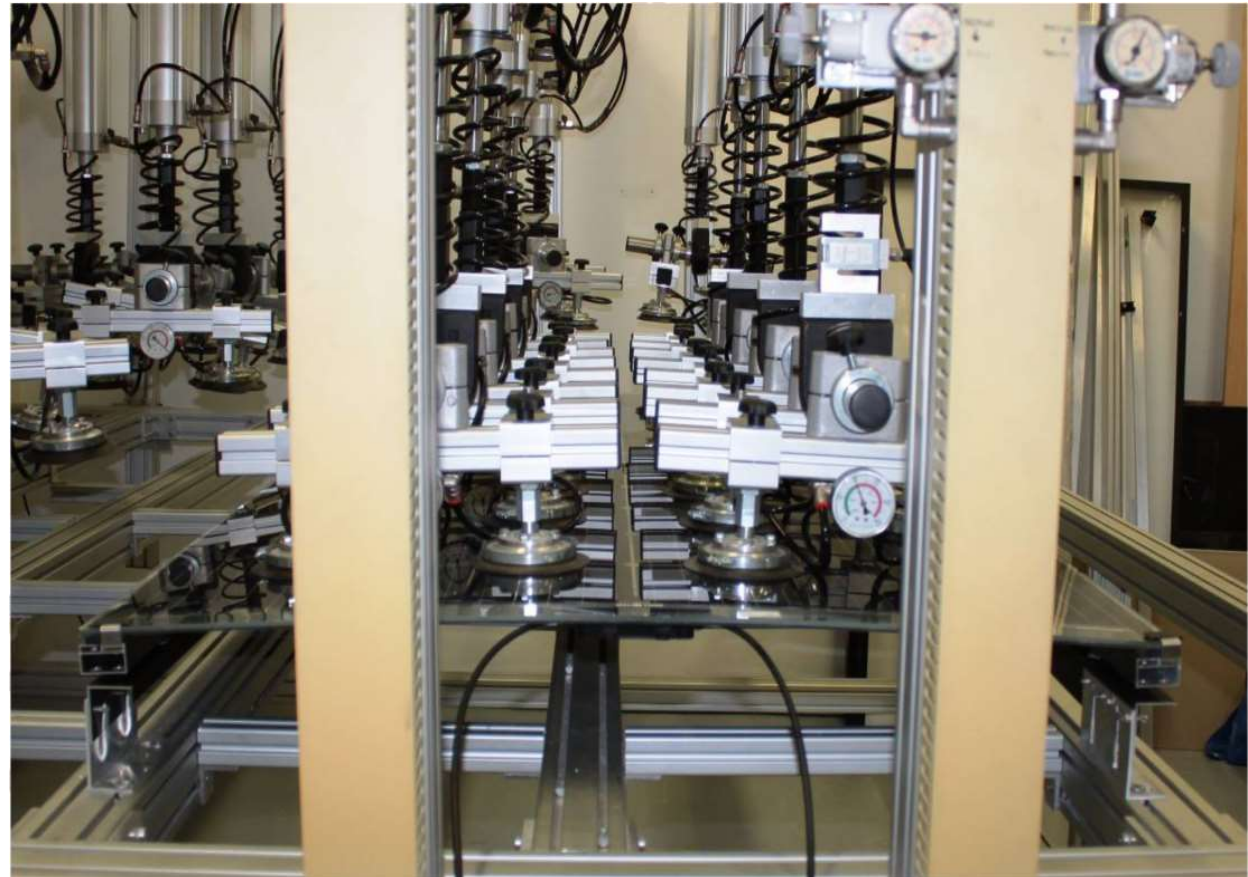
SOLID Wall v2. testing - SIKA

- SG500 – structural glazing adhesive that is complying with EOTA ETAG 002 requirements
- System details:
 - I. Nominal operating temperature -40; 85C
 - II. The dead load of all panels is transferred to the adhesive



SOLID Wall v2. testing - DEKRA

- Passed physical testing at DEKRA lab
 - I. 2400/2400 Pa
 - II. 3600/2400 Pa
 - III. 3600/3600 Pa

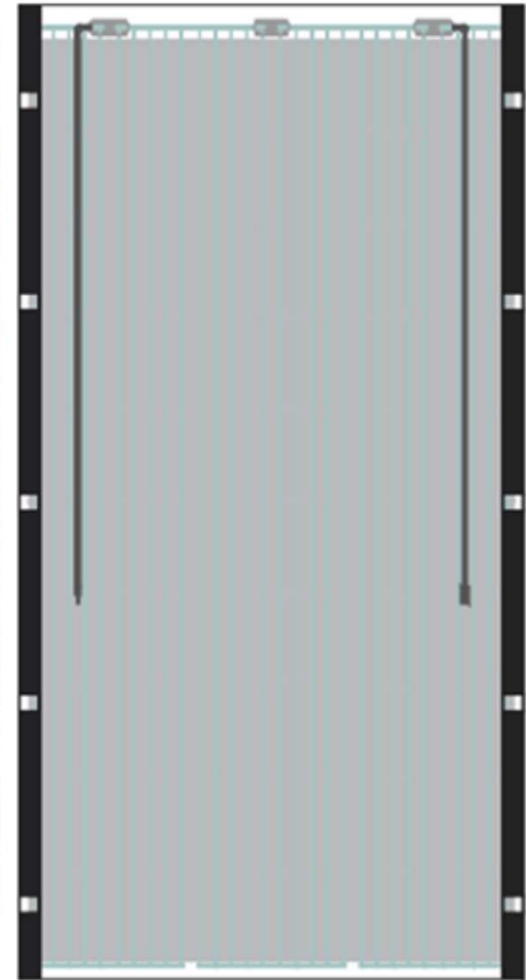


SOLID Wall v2. testing – VILNIUS TECH

- Simulations done by civil engineering research centre
- Suitable for operation with up to 4 kPa wind load
- Mechanical breakage is achieved only at 9,35 kPa

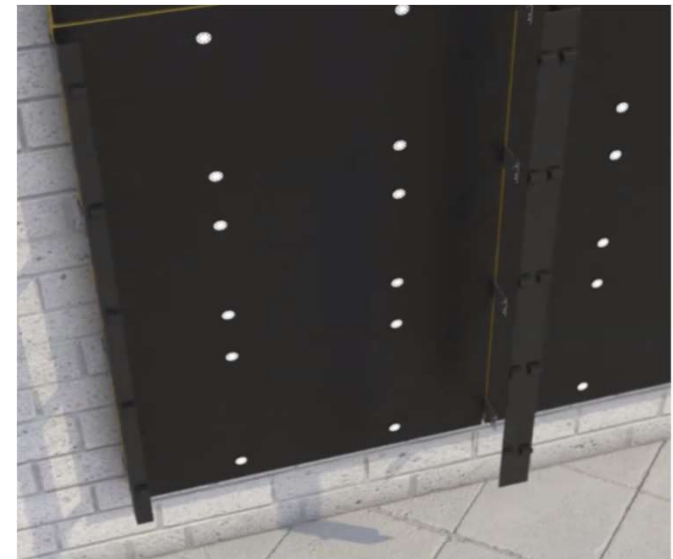
Preassembled profiles

Back profiles are preassembled in factory. Profiles are applied with special silicon solution on the rear side of the module – from front side of module profiles are invisible.



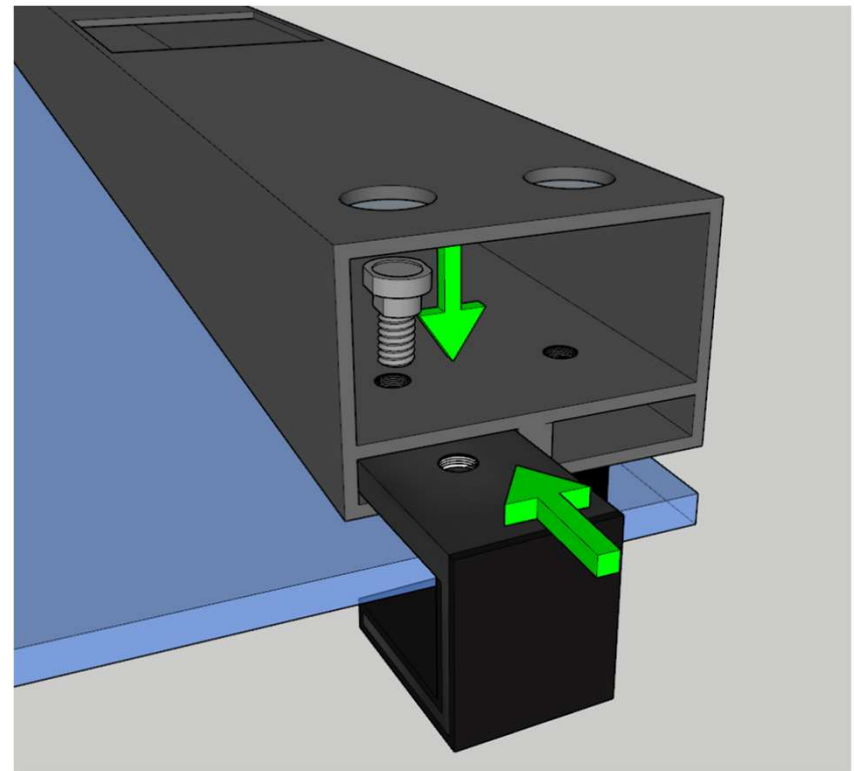
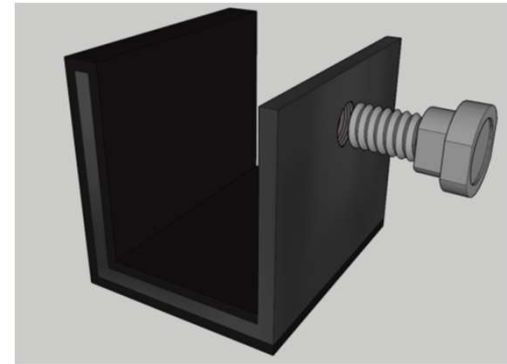
Preassembled T/L profiles

A special T/L profiles are preassembled with special hooks. T/L profiles are used as guiding rail for hooking the modules.

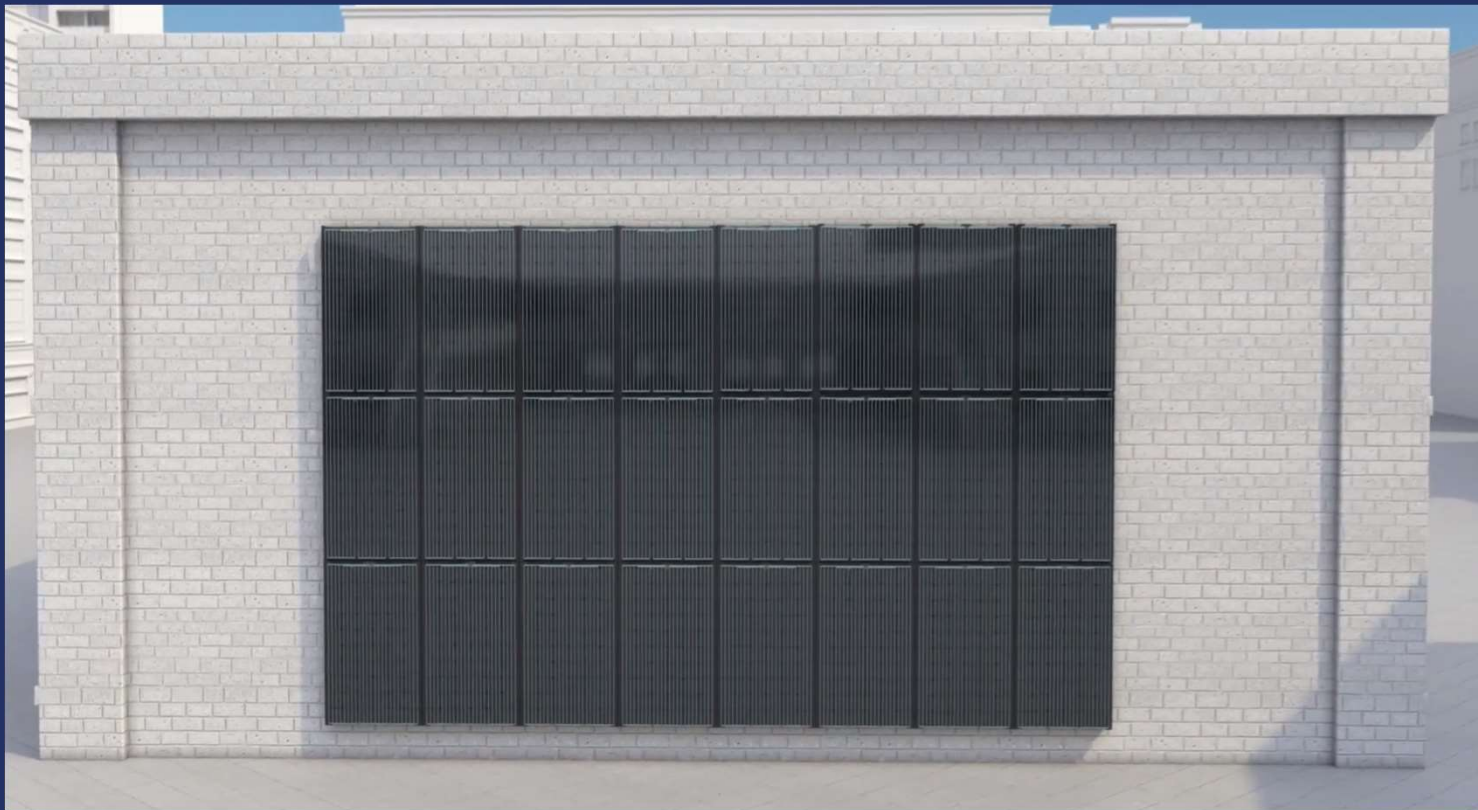


Additional safety component

A special safety hook is attached between the module and back profile with bolt. It gives additional durability to the system from a mechanical perspective.



Easy mounting

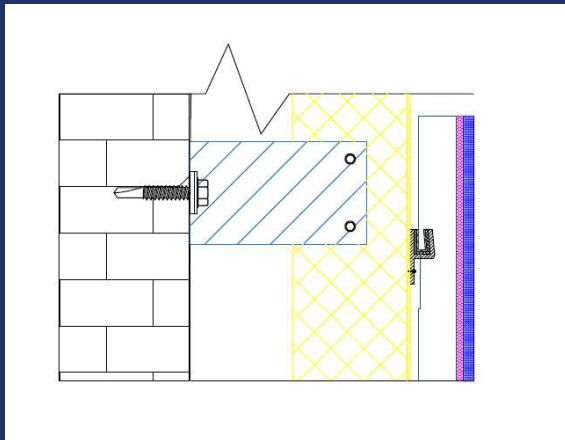


Key points

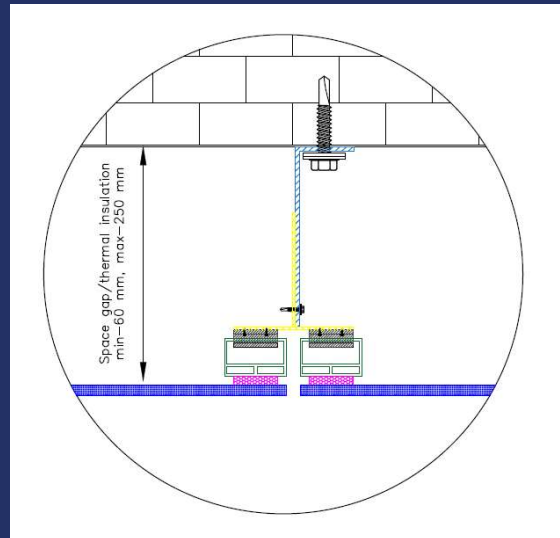
- Mounting systems is attached to panels in the factory;
- Fixing materials comes in complex;
- Just 4 steps of mounting;
- 1 panel – 5 minutes;
- Electrical part (must done by professionals) - 30 minutes for 1 string.

System's sections

Vertical



Horizontal



Fits on:

- Bricks;
- Blocks;
- Concrete;
- Composite materials;
- Wood;
- Sandwich plates;
- Stonework.

Advantages of SOLID Wall system

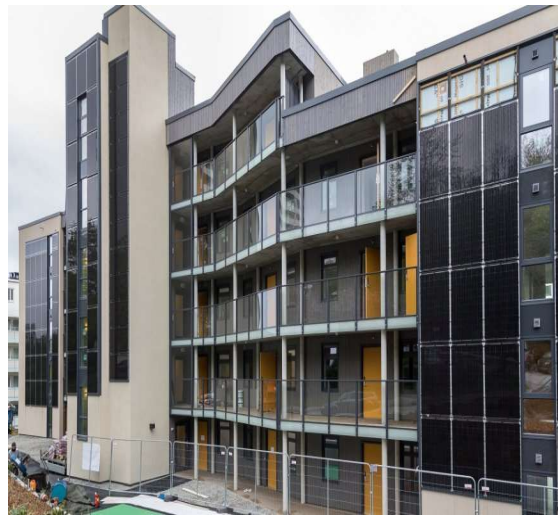
- Fast assembling and easy mounting
- Ventilated and frameless
- Simple maintenance
- Fits on various types of wall
- Invisible mounting materials
- Resistant to rain, cold and heat, weather with higher ammonium level and marine climate;
- Fire class A
- Able to withstand high wind loads (up to 2400 Pa)
- Two different mounting orientations – portrait and landscape



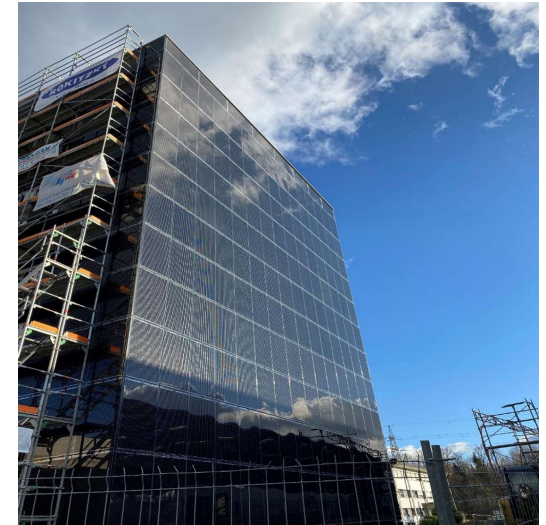
SOLID Wall projects



SOLID Wall,
12 kW, Estonia



SOLID Wall,
42 kW, Norway



SOLID Wall,
665 kW, Switzerland



SOLI  TEK

2021

Thank you!