

Commissioning Fronius Monitoring via SMART PHONE/TABLET

Using the Datamanager V 2.0

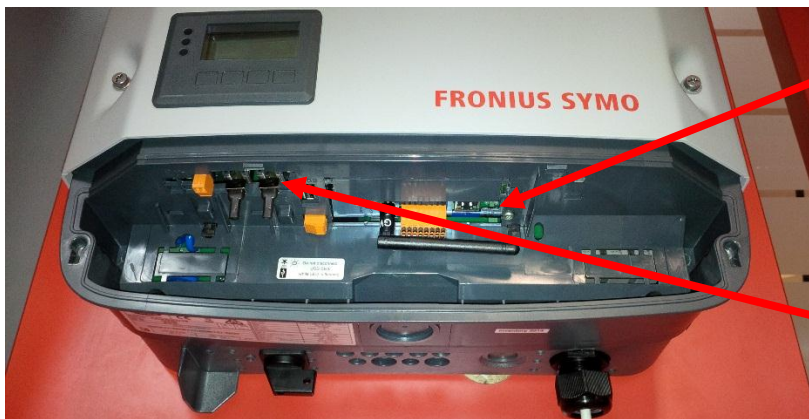
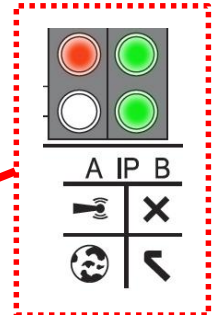
For Fronius SnapINverters: Galvo/Primo/Symo/Eco

1 BEFORE YOU START

Get the password and the name (SSID) of the WiFi network you want to get connect to.

Connect your smart phone or smart device to the WiFi network in order to check the availability of the internet.

Check the status of all the four LEDs on the Datamanager (DM) Card inbuilt in the inverter. The 'tick LED' and the 'cross LED' light up need to be green. If not, check the DM card and also termination plugs are inserted properly (located in the data communication compartment at the bottom of the inverter).



2 SETTING UP MONITORING USING A SMART PHONE OR A TABLET

Download Fronius Solar.Web App from App store or Google Play and install it on a smart phone or tablet. Or go to: <https://wizard.solarweb.com/downloadApp.html>



[Android](#)
[iOS](#)
[Mac OSX](#)



[Android](#)
[iOS](#)

1. Activate the 'WiFi Access Point' via the 'SETUP menu' on the display of the inverter. If using a Datamanager Box move the IP switch into position 'A'.

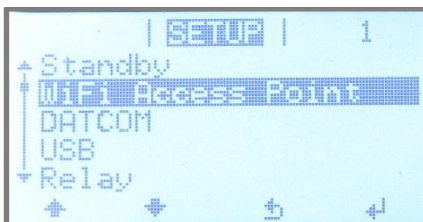


Fig.1: Activating the WiFi access point on the Inverter's display - Setup menu

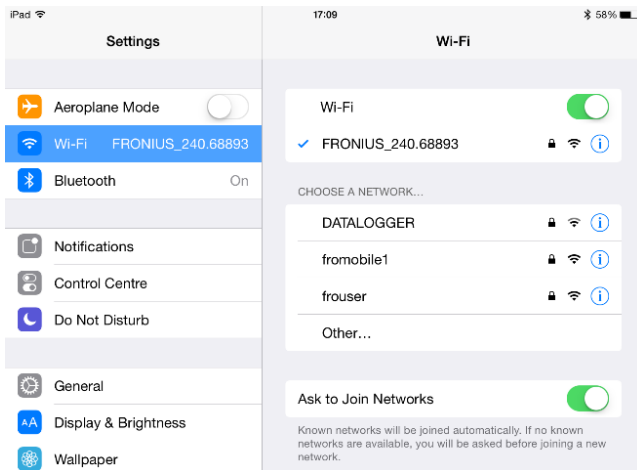


Fig.2: Network connections settings on Apple iPad

2. Connect the smart device (Tablet or Smartphone) to the WiFi network of the inverter.
 - o Search for the network with the name "Fronius_240.xxxxx" on the device.
 - o Enter password: **12345678**

3. Open the SolarWeb App on the smart device. If the SolarWeb App recognizes that it is already connected to an inverter it will ask whether to start the Setup wizard. -> select 'Yes'
Alternatively click on the red button in the right bottom corner or go to 'Settings' -> 'Setup inverter'

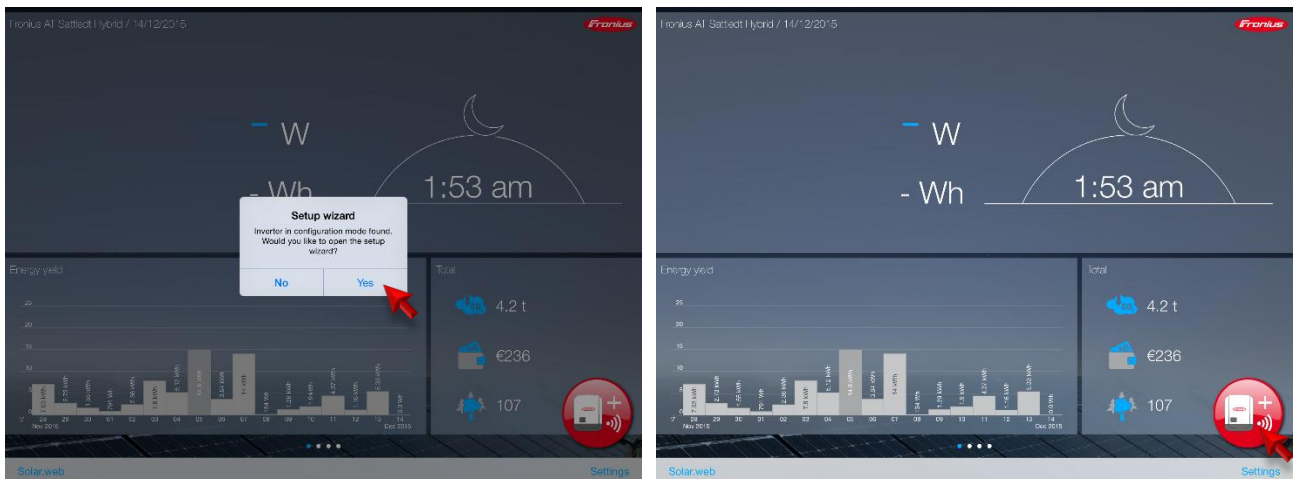


Fig.3: SolarWeb App screen shows how continue to the installation wizard.

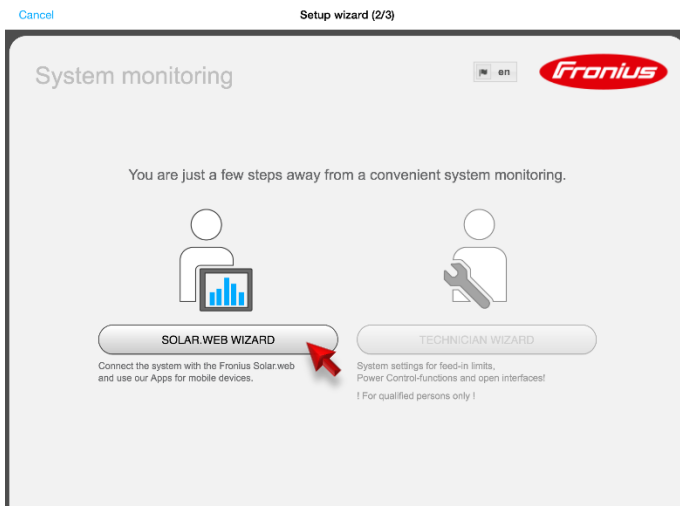


Fig.4: Start of the installation wizard in Fronius SolarWeb App

4. Run the **SolarWeb Wizard** and follow the instructions.

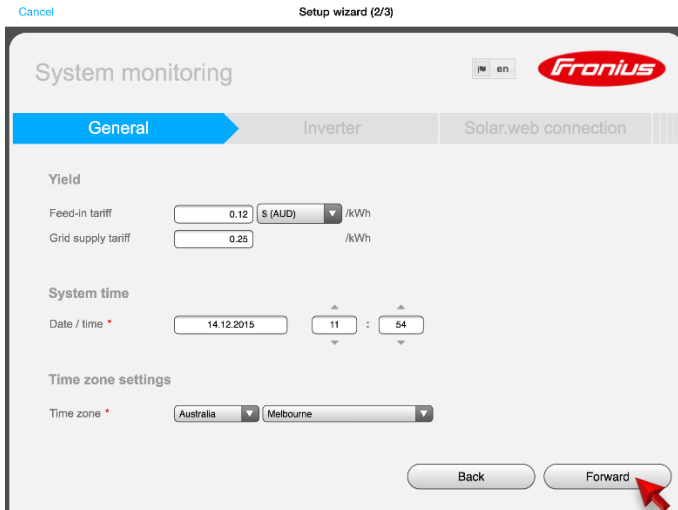


Fig.5: Fronius SolarWeb App General Settings

5. Enter the correct **date and time**.
(it might be pulled from your smart device automatically)
6. Select the right **time zone**.
(it might be pulled from your smart device automatically)

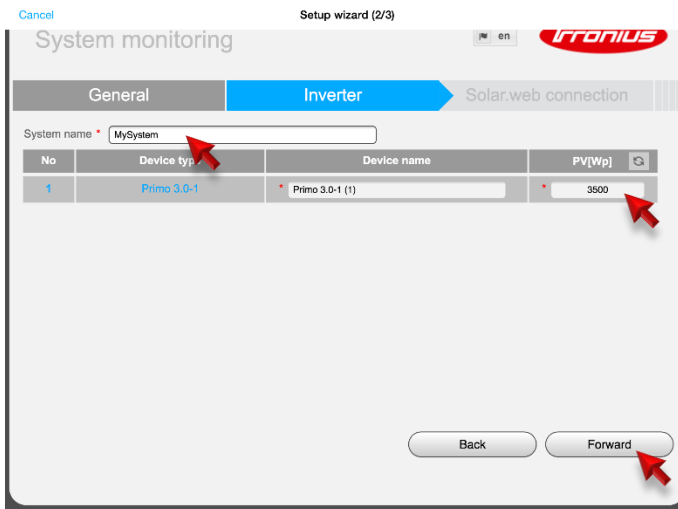


Fig.6: Fronius SolarWeb App Inverter Settings

7. Assign a **system name** to your system.
8. Enter the **solar module power** connected to the inverter in Watts (Wp).

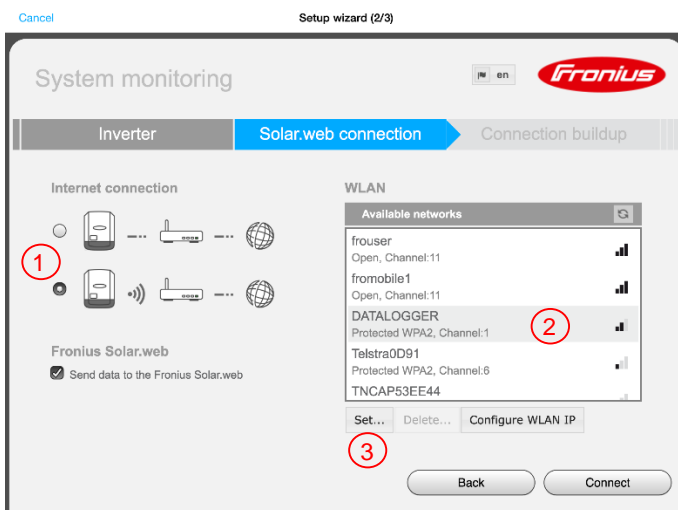


Fig.7: Fronius SolarWeb App Connection Settings

9. To get the internet connection settings done **choose the connection type (1)**:
 - a. Hard wired LAN connection or
 - b. wireless LAN (WiFi) connection (default)
10. For wireless LAN: **Select the customer's WiFi network** under 'Available networks' (2).

 Note: The option 'Add WLAN' is used to enter the name and password for the customer's hidden Wi-Fi network.
11. Click '**Set**' (3) to enter the password for the customer's WiFi network in the popup window.

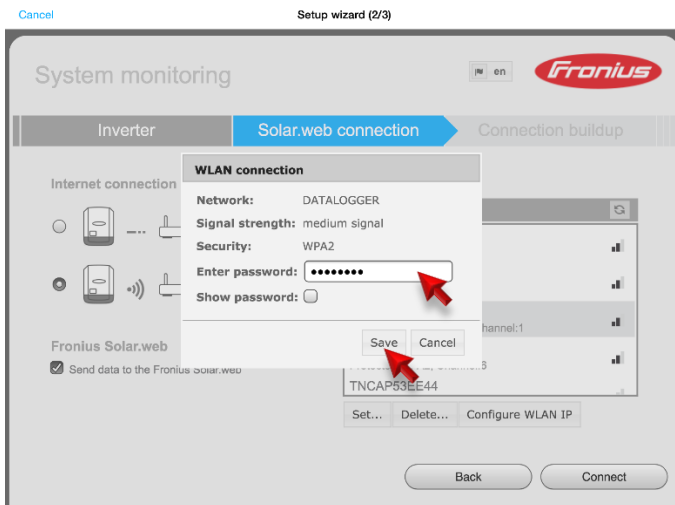


Fig.8: Fronius SolarWeb App Connection Settings - WiFi password

12. Enter the **password** of the customer's WiFi network in the popup window.
13. Click '**Save**'.

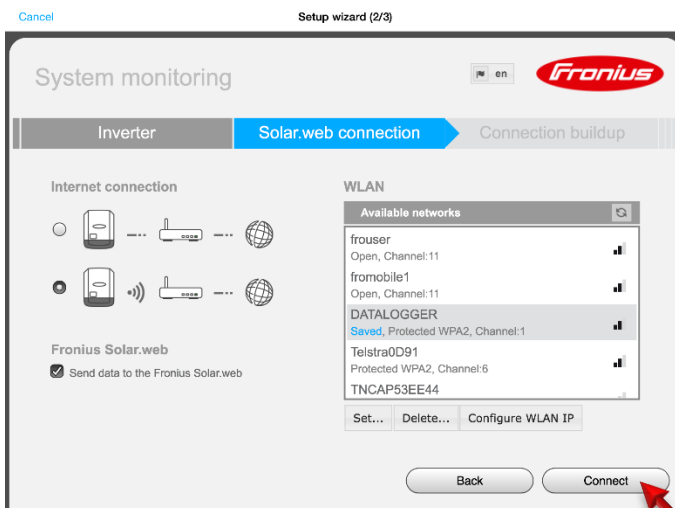


Fig.9: Fronius SolarWeb App Connection Settings

14. **Optional:** If a static IP address is required follow the instructions at chapter '5 INTERNET CONNECTION WITH A STATIC IP ADDRESS' at this stage and continue here later again.
15. Click '**Connect**'

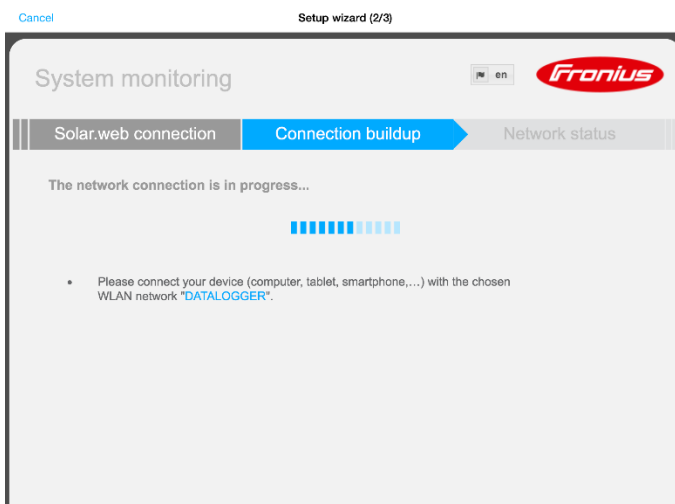


Fig.10: Wizard in Fronius SolarWeb App

16. Close the Solar.Web App.
17. Connect your smart device (Smartphone or Tablet) to the customer's WiFi network. (in order to check whether the inverter has successfully connected to the customers network). Therefore go to the Wi-Fi settings of the smart device and change to the network.

Hint: In case the smart device has been connected to the homeowners Wi-Fi network before the App will reconnect automatically (no need to manually change the WiFi connection on the smart device).

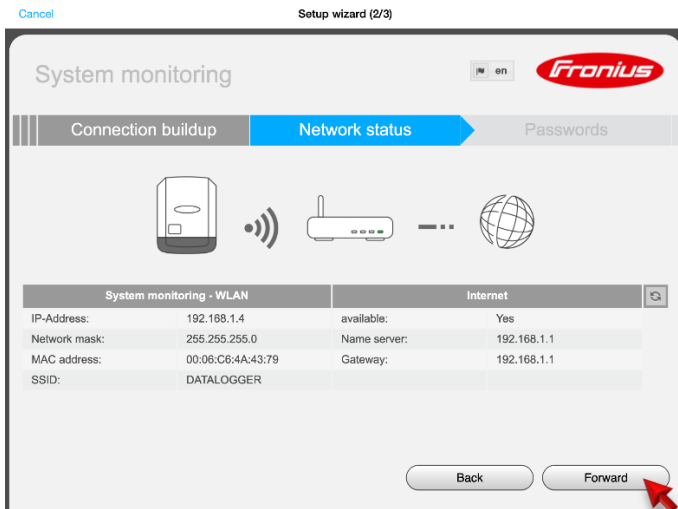


Fig. 11: Wizard in Fronius SolarWeb App – Network status

18. Re-open the Solar.Web App and wait for the Network status window to appear.

- If the **internet availability** is displayed with 'Yes', click on 'Forward'.
- If the internet availability is displayed with 'No' please, click on 'Back' to re-enter the (correct) password or talk to the network administrator.

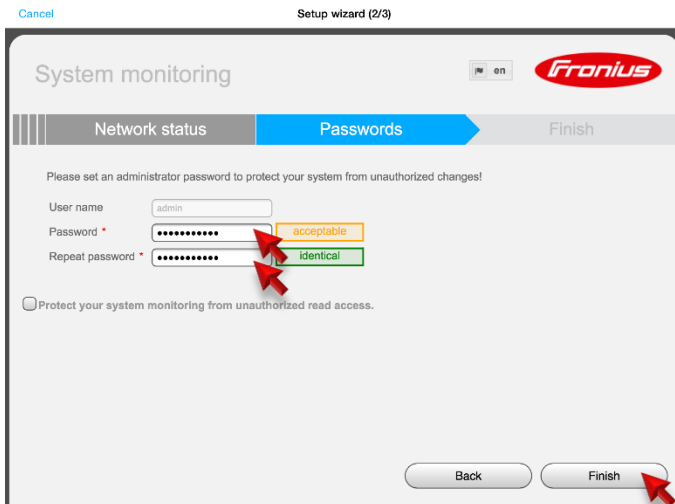


Fig. 12: SolarWeb App – Password protection for the settings

19. Choose a **password**. (Also note down the password for your record!)

20. Click on 'Finish'.

Note! The inverter is now successfully connected to the internet. The system need still to be added to a SolarWeb monitoring account. Therefore see next chapter.

3 ADDING A SYSTEM TO SOLARWEB MONITORING

There are two ways of registering a PV system (or data source) on SolarWeb, either automatic via the SolarWeb App by continuing the SolarWeb Wizard or register it manually.

A) Automatically

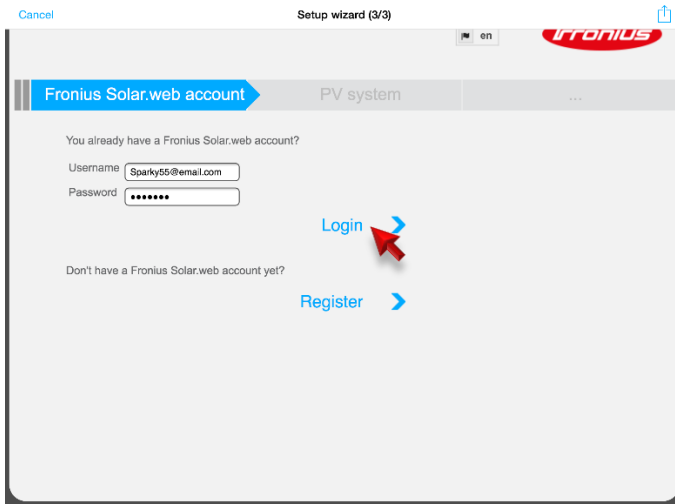


Fig. 13: SolarWeb App – Adding a system to a SolarWeb account

- / To add the new system / logging source to your monitoring account on SolarWeb,
 - Login with your username and password if you have already registered an account in the Fronius SolarWeb portal.
 - If you don't have a SolarWeb account, click on 'Register' to create your account first.

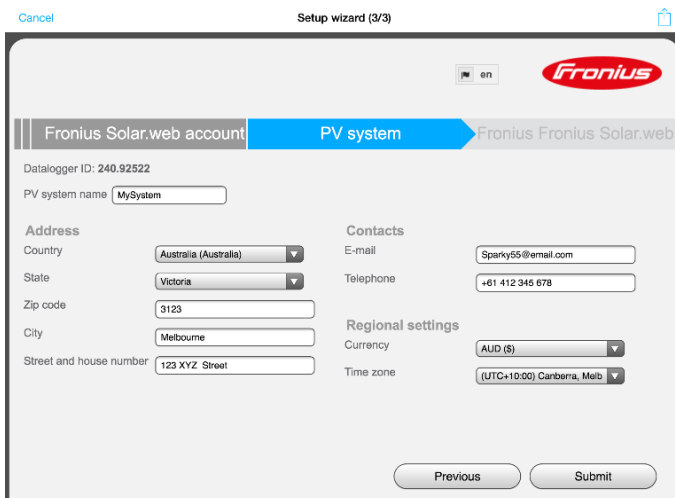


Fig. 14: SolarWeb App – Adding a system to a SolarWeb account

- Fill in the form for system details

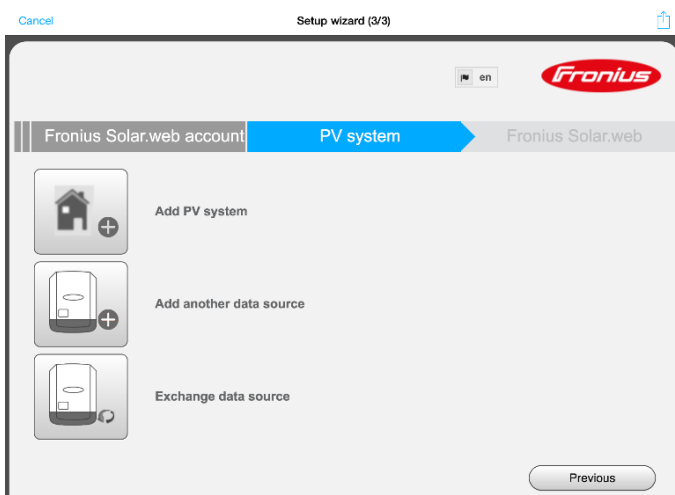


Fig. 15: SolarWeb App – Adding a system to a SolarWeb account

- Select whether you want to
 - i. Create a new PV system
 - ii. Add a datasource to an existing system
 - iii. Exchange a datasource

B) Adding the System manually

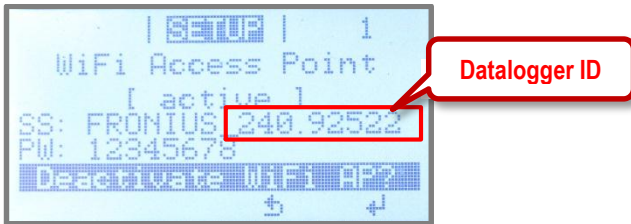


Fig.16: Inverter display – WiFi hotspot name

- / Alternatively the system / logging source can be added manually to www.solarweb.com.
- ➔ Note down the **Datalogger ID** from the inverter's display (it is part of the name of the WiFi Access Point starting with 240.xxxxx)

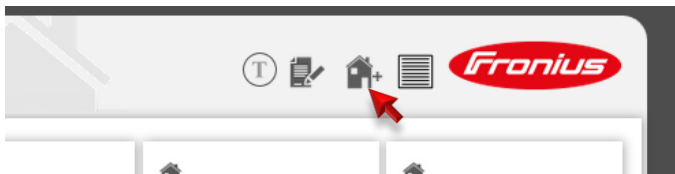


Fig.17: www.SolarWeb.com – Icon to add a system

- ➔ Go to www.solarweb.com login and select the icon -> 'Add system'

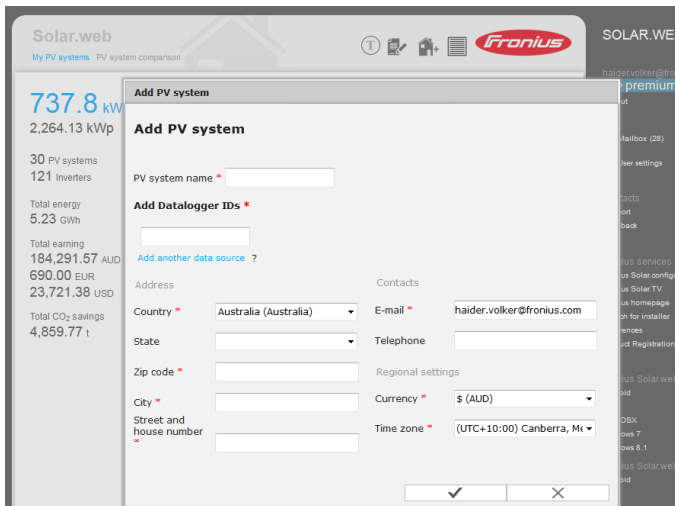


Fig.18: www.SolarWeb.com – Adding a system to a SolarWeb account

- ➔ Fill out the online form in the popup window.
 - PV system name
 - Datalogger ID
 - Address of the installation
 - Email address
 - Currency
 - Time zone

If everything went well the PV on solarweb.com will look like this.

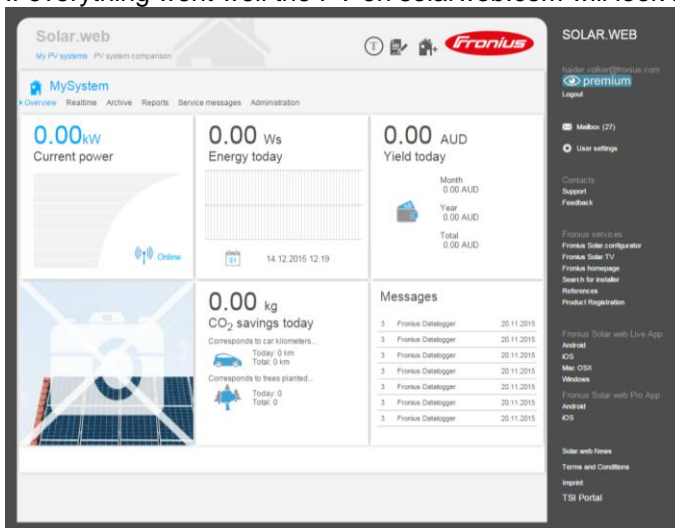
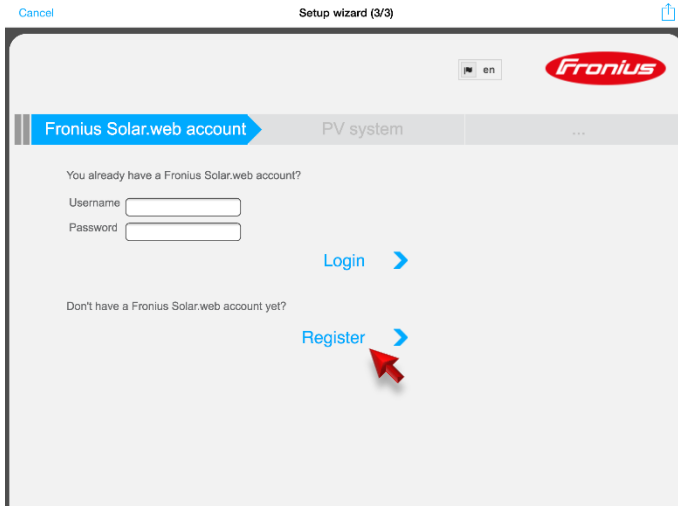


Fig.19: www.SolarWeb.com – PV System Overview page

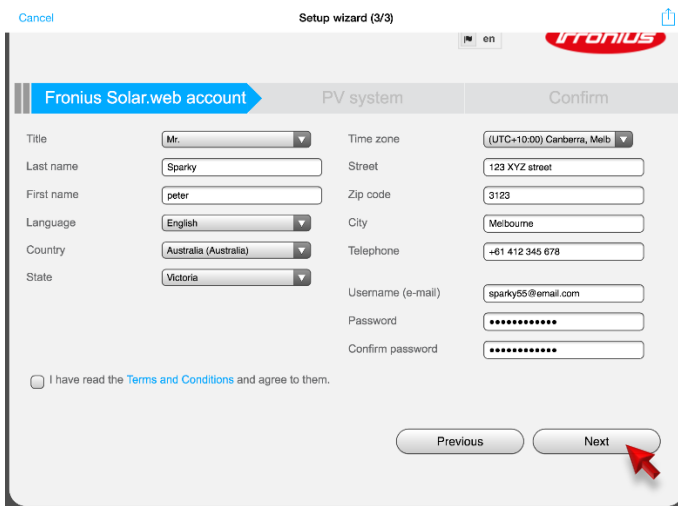
4 REGISTER AN ACCOUNT ON SOLAR WEB

There are two ways of registering a monitoring account on SolarWeb, either automatic via the SolarWeb App by continuing the SolarWeb Wizard or register it manually.



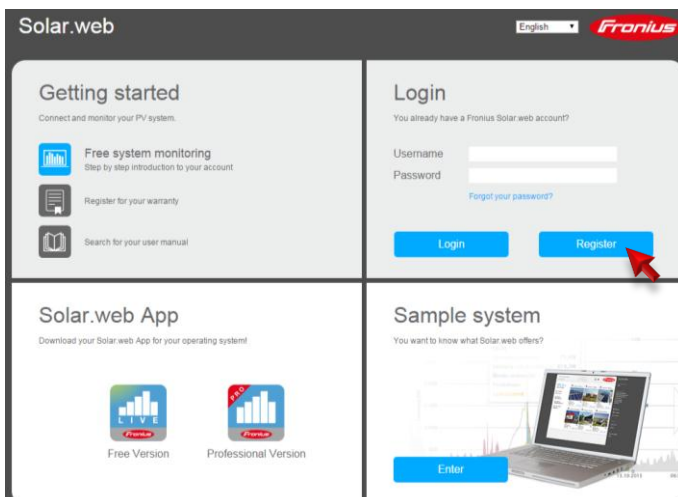
→ Click 'Register'

Fig.19: SolarWeb App – Setup Wizard



→ Fill out the registration form

Fig.20: SolarWeb App – Setup Wizard

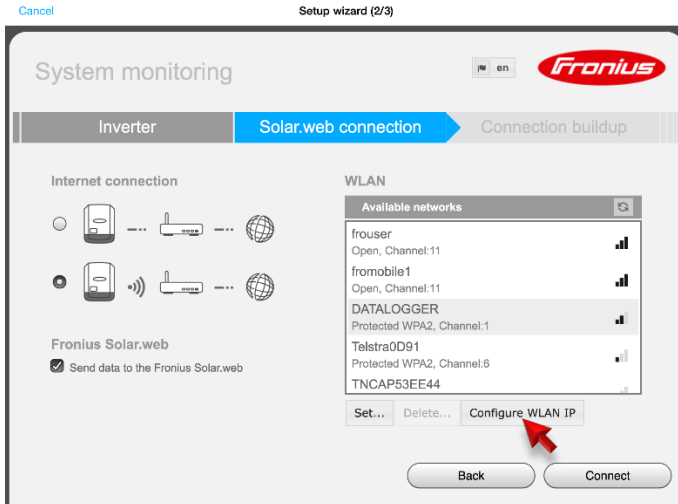


→ Alternatively go to www.solarweb.com and select 'Register'

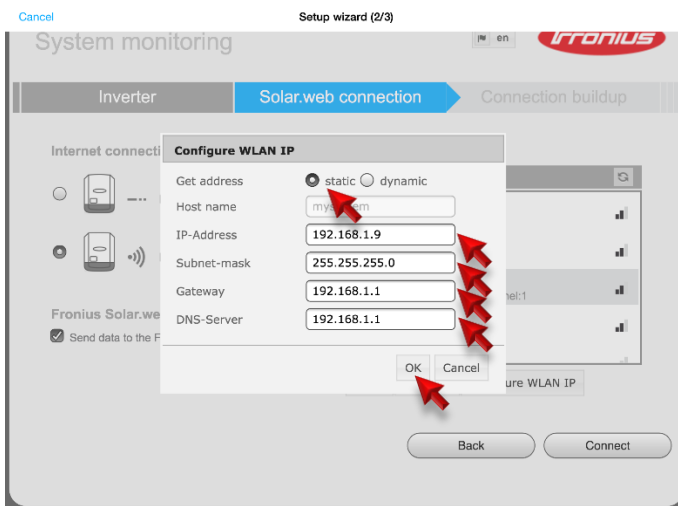
Fig.21: www.SolarWeb.com – start page

5 INTERNET CONNECTION WITH A STATIC IP ADDRESS

For a commercial installation it may be required to connect the inverter via a static IP address. Get the details of static IP address and the required network from the local IT administrator.



14a. Select 'Configure WLAN IP'.



14b. Configure the wireless LAN connection

- Chose 'static'.
- Static IP address
- Subnet mask
- Gateway IP address
- DNS-Server IP address

14c. Save settings by pressing OK and continue with the settings described above in chapter 2/ step 15.

Fronius reserves all rights, in particular rights of reproduction, distribution and translation. No part of this work may be reproduced in any way without the written consent of Fronius. It must not be saved, edited, reproduced or distributed using any electrical or electronic system. You are hereby reminded that the information published in this document, despite exercising the greatest of care in its preparation, is subject to change and that neither the author nor Fronius can accept any legal liability. Gender-specific wording refers equally to female and male form.