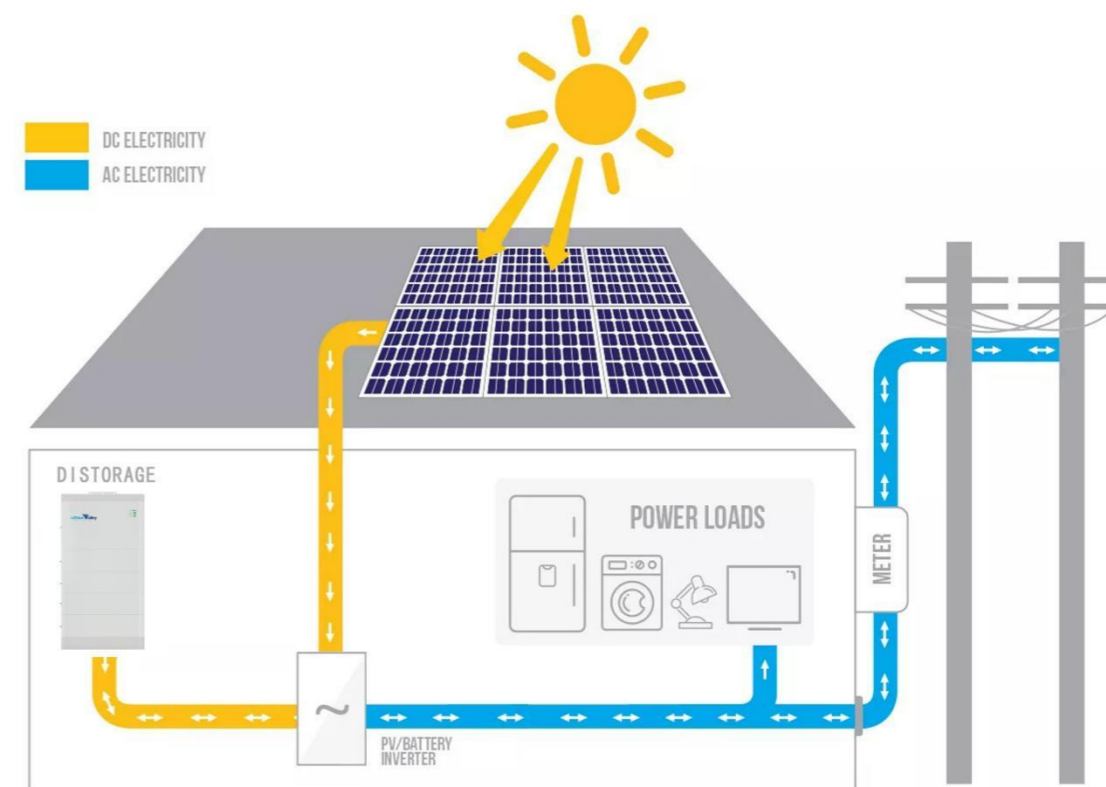


Smart Household Energy Storage System

- High-voltage LiFePO4 battery solution, Single module is 51.2V 50Ah 2.56kWh.
- 3 to 10 layers recommended.
- Inverter you need to choose 380V 3phase input and output, common is 8-15KW inverter.
- Cobalt Free Lithium Iron Phosphate (LFP) Battery: Maximum Safety, Life Cycle and Power.
- Applicable on grid or hybrid on and off-Grid solar energy storage system.
- Self-Consumption Optimization for Residential and Commercial Applications.
- Modular Design Simplifies Transport and Installation.





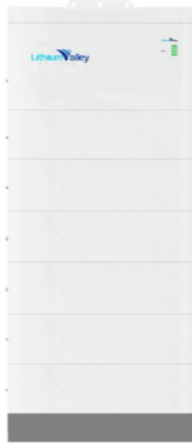
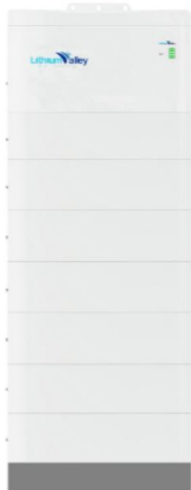
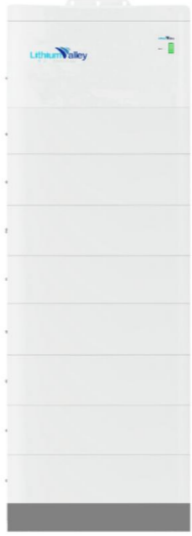
Shenzhen Lithium Valley Technology CO., LTD

Head Office:
Room 2018, HuiLong Business Center
Minzhi Street, Longhua District
Shenzhen China

Factory address:
No.4, Fuzhu 4th Street Zhangyang
Community Zhangmutou Town
Dongguan China

Logistic Center:
Unit 11,27/F, K. Wah Centre, 191 Java
Road, North Point, Hong Kong

Technical Specification

Model	153.6V 50Ah	204.8V 50Ah	256V 50Ah	307.2V 50Ah	358.4V 50Ah	409.6V 50Ah	460.8V 50Ah	512V 50Ah
Number of layers	3 layers	4 layers	5 layers	6 layers	7 layers	8 layers	9layers	10layers
Picture								
Energy	7.68KWh	10.24KWh	12.8KWh	15.36KWh	17.92KWh	20.48KWh	23.04KWh	25.6KWh
Operating Voltage Range	129.6V~168.48V	172.8V~224.64V	216V~280.8V	259.2V~336.96V	302.4V~393.12V	345.6~449.28V	388.8V~505.44V	432V~561.6V
Dimension (L*W*H)	600*210*820	600*210*980	600*210*1140	600*210*1300	600*210*1460	600*210*1620	600*210*1780	600*210*1940
Net Weight	102.5	129	155.5	182	208.5	235	261.5	288
Recommend charge current	10~25A							
Max continue charge current	50A							
Max continue discharge current	50A							
Peak current	100A							
Display	The information of Battery, such as SOC, battery voltage and so on							
Communication	Support RS485 / CAN							
Operating temperature	-20℃~55℃							
Environment	Indoor							
Relative humidity	5%~95%							
Cooling	Natural convection							
Cell technology	Lithium-iron phosphate (LiFePO4)							
Life cycle	6000 times @80%DOD							

Single module Technical Specification

Dimension (L*W*H)	High Voltage Box:600*210*250 Battery Box:600*210*160
Battery module weight	26.5kg

