

# JUPITER-9000K-H1

## Smart Transformer Station



### Simple

Prefabricated and Pre-tested, No Internal Cabling Needed Onsite  
Compact 20' HC Container Design for Easy Transportation



### Efficient

High Efficiency Transformer for Higher Yields  
Lower Self-consumption for Higher Yields



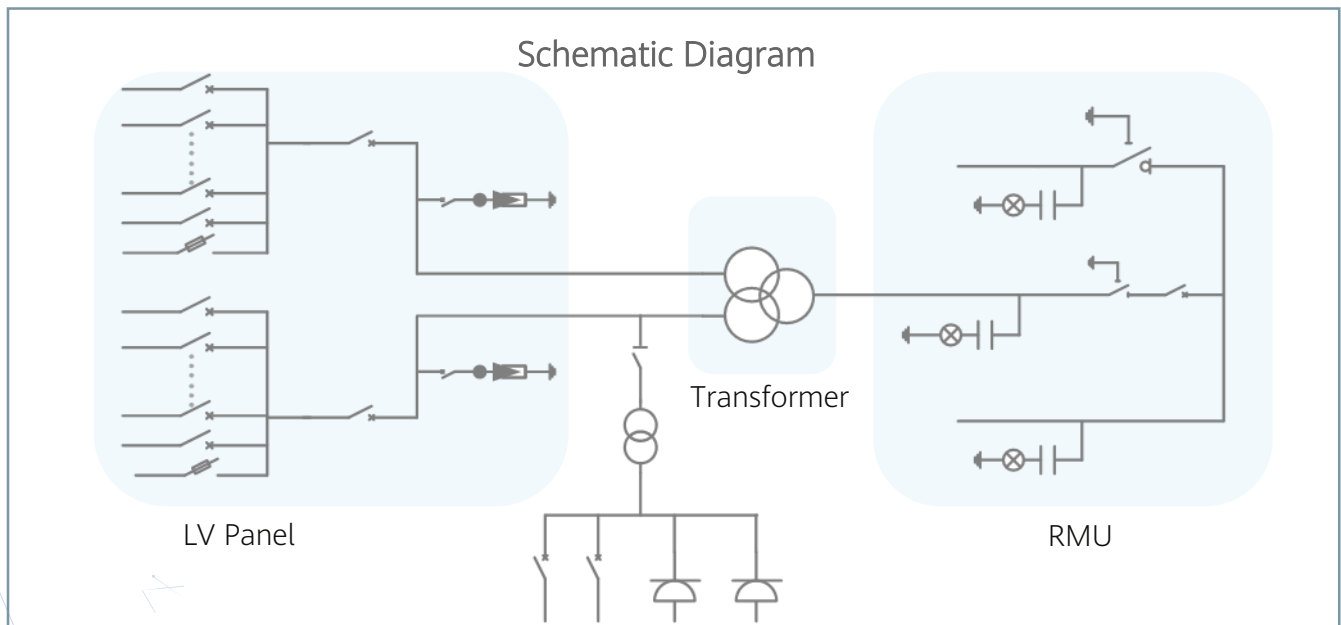
### Smart

Real-time Monitoring of Transformer, LV Panel and RMU  
High Precision Sensor of LV Electricity Parameters  
Remote Control of ACB and MV Circuit Breaker



### Reliable

Robust Design against Harsh Environments  
Optimal Cooling Design for High Availability and Easy O&M  
Comprehensive Tests from Components, Device to Solution



# Technical Specifications

Input	
Available Inverters	SUN2000-330KTL-H1 / SUN2000-330KTL-H2
Max. LV AC Inputs	30
AC Power	9,000 kVA @40°C / 8,250 kVA @50°C <sup>1</sup>
Rated Input Voltage	800 V
LV Main Inputs	ACB (4,000 A / 800 V / 3P, 2 x 1 pcs), MCCB (400 A / 800 V / 3P, 2 x 15 pcs)
Output	
Rated Output Voltage	22 kV, 30 kV, 33 kV, 34.5 kV, 35 kV <sup>2</sup> 33 kV, 34.5 kV <sup>2</sup>
Frequency	50 Hz      60 Hz
Transformer Type	Oil-immersed, Conservator Type
Transformer Cooling Type	ONAN
Transformer Tappings	± 2 x 2.5%
Transformer Oil Type	Mineral Oil (PCB Free)
Transformer Vector Group	Dy11-y11
Transformer Min. Peak Efficiency Index	In Accordance with EN 50588-1
RMU Type	SF <sub>6</sub> Gas Insulated
RMU Transformer Protection Unit	MV Vacuum Circuit Breaker Unit
RMU Cable Incoming / Outgoing Unit	Direct Cable Unit or Cable Load Break Switch Unit
Auxiliary Transformer	Dry Type Transformer, 5 kVA, Single-phase, li0
Output Voltage of Auxiliary Transformer	230 / 127 Vac
Protection	
Transformer Monitoring & Protection	Oil Level, Oil Temperature, Oil Pressure and Buchholz
Protection Degree of MV & LV Room	IP 54
Internal Arcing Fault of STS	IAC A 20 kA 1s
MV Relay Protection	50/51, 50N/51N
LV Overvoltage Protection	Type I+II
Anti-rodent Protection	C5-Medium in accordance with ISO 12944
Features	
2 kVA UPS	Optional <sup>3</sup>
MV Surge Arrester for Transformer	Optional <sup>3</sup>
General	
Dimensions (W x H x D)	6,058 x 2,896 x 2,438 mm (20' HC Container)
Weight	< 28 t
Operating Temperature Range	-25°C ~ 60°C <sup>4</sup> (-13°F ~ 140°F)
Relative Humidity	0% ~ 95%
Max. Operating Altitude	1,000 m <sup>5</sup>
MV-LV AC Connections	Prewired and Pretested, No Internal Cabling Onsite
LV & MV Room Cooling	Smart Cooling without Air-across for Higher Availability
Communication	Modbus TCP, Preconfigured with SmartACU2000D
Applicable Standards	IEC 62271-202, EN 50588-1, IEC 60076, IEC 62271-200, IEC 61439-1

1 - More detailed AC power of STS, please refer to the de-rating curve.

2 - Rated output voltage from 10 kV to 35 kV, more available upon request.

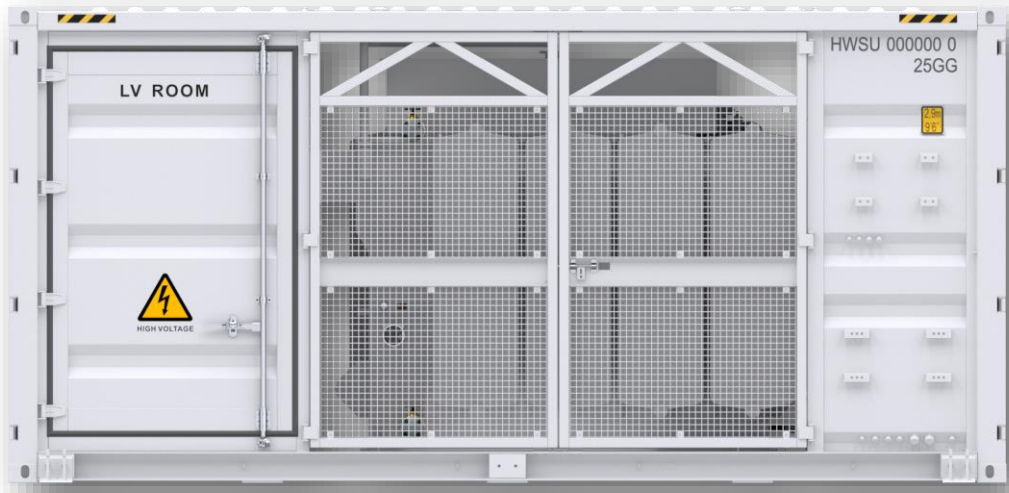
3 - Extra expense needed for optional features which standard product doesn't contain, more options upon request.

4 -When ambient temperature ≥25°C, awning shall be equipped for STS on site by customer.

5- For higher operating altitude, pls consult with Huawei.

# JUPITER-6000K-H1

## Smart Transformer Station



### Simple

Prefabricated and Pre-tested, No Internal Cabling Needed Onsite  
Compact 20' HC Container Design for Easy Transportation



### Efficient

High Efficiency Transformer for Higher Yields  
Lower Self-consumption for Higher Yields



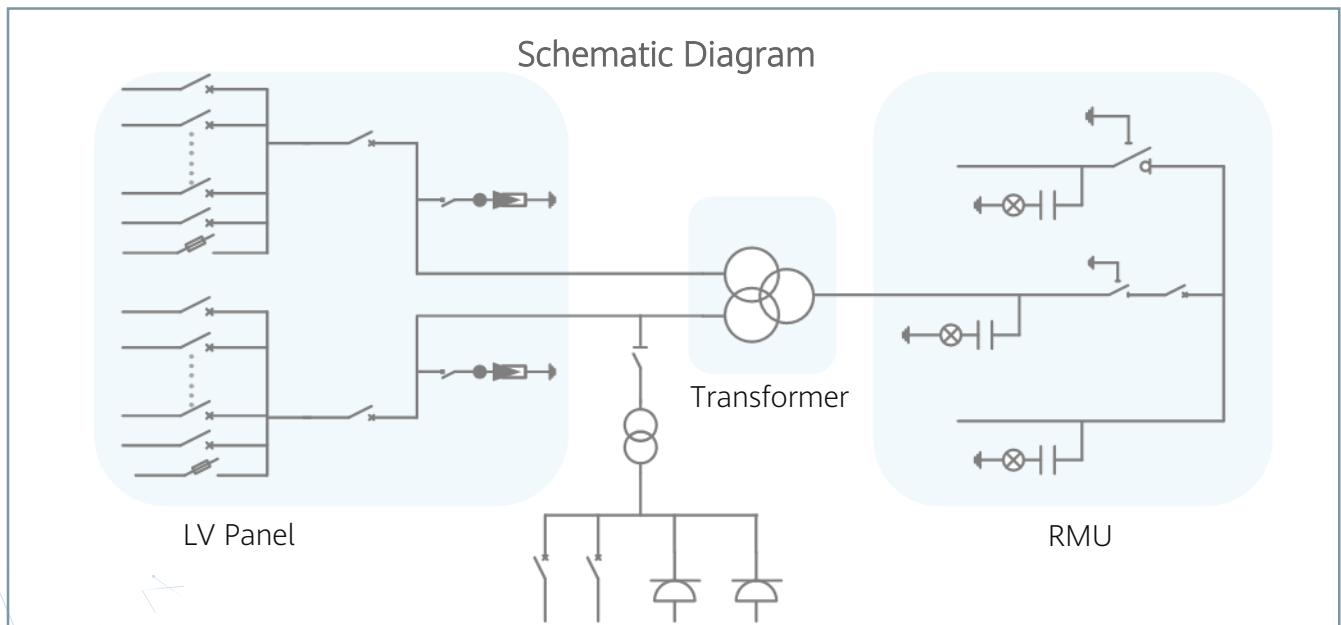
### Smart

Real-time Monitoring of Transformer, LV Panel and RMU  
High Precision Sensor of LV Electricity Parameters  
Remote Control of ACB and MV Circuit Breaker



### Reliable

Robust Design against Harsh Environments  
Optimal Cooling Design for High Availability and Easy O&M  
Comprehensive Tests from Components, Device to Solution



# Technical Specifications

Input		
Available Inverters / PCS	SUN2000-330KTL-H1 / SUN2000-330KTL-H2	
Maximum LV AC Inputs	22	
AC Power	6,600 kVA @40°C / 6,050 kVA @50°C <sup>1</sup>	
Rated Input Voltage	800 V	
LV Main Switches	ACB (2,900 A / 800 V / 3P, 2 x 1 pcs), MCCB (400 A / 800 V / 3P, 2 x 11 pcs)	
Output		
Rated Output Voltage	10 kV, 11 kV, 13.2 kV, 15 kV, 20 kV, 22 kV, 23±10% kV, 30 kV, 33 kV, 34.5 kV, 35 kV <sup>2</sup>	12.47 kV, 13.8 kV, 23 kV, 33 kV, 34.5 kV <sup>2</sup>
Frequency	50 Hz	60 Hz
Transformer Type	Oil-immersed, Conservator Type	
Transformer Cooling Type	ONAN	
Transformer Tappings	± 2 x 2.5%	
Transformer Oil Type	Mineral Oil (PCB Free)	
Transformer Vector Group	Dy11-y11	
Transformer Min. Peak Efficiency Index	In Accordance with EN 50588-1	
RMU Type	SF <sub>6</sub> Gas Insulated	
RMU Transformer Protection Unit	MV Vacuum Circuit Breaker Unit	
RMU Cable Incoming / Outgoing Unit	Direct Cable Unit or Cable Load Break Switch Unit	
Auxiliary Transformer	Dry Type Transformer, 5 kVA, Single-phase, li0	
Output Voltage of Auxiliary Transformer	230 / 127 Vac	
Protection		
Transformer Monitoring & Protection	Oil Level, Oil Temperature, Oil Pressure and Buchholz	
Protection Degree of MV & LV Room	IP 54	
Internal Arcing Fault Classification of STS	IAC A 20 kA 1s	
MV Relay Protection	50/51, 50N/51N	
LV Overvoltage Protection	Type I+II	
Anti-rodent Protection	C5-Medium in accordance with ISO 12944	
Features		
2 kVA UPS	Optional <sup>3</sup>	
MV Surge Arrester for Transformer	Optional <sup>3</sup>	
General		
Dimensions (W x H x D)	6,058 x 2,896 x 2,438 mm (20' HC Container)	
Weight	< 23 t	
Operating Temperature Range	-25°C ~ 60°C <sup>4</sup> (-13°F ~ 140°F)	
Relative Humidity	0% ~ 95%	
Max. Operating Altitude	1,000 m <sup>5</sup>	
MV-LV AC Connections	Prewired and Pretested, No Internal Cabling Onsite	
LV & MV Room Cooling	Smart Cooling without Air-across for Higher Availability	
Communication	Modbus-RTU, Preconfigured with Smartlogger3000B	
Applicable Standards	IEC 62271-202, EN 50588-1, IEC 60076, IEC 62271-200, IEC 61439-1	

1 - More detailed AC power of STS, please refer to the de-rating curve.

2 - Rated output voltage from 10 kV to 35 kV, more available upon request.

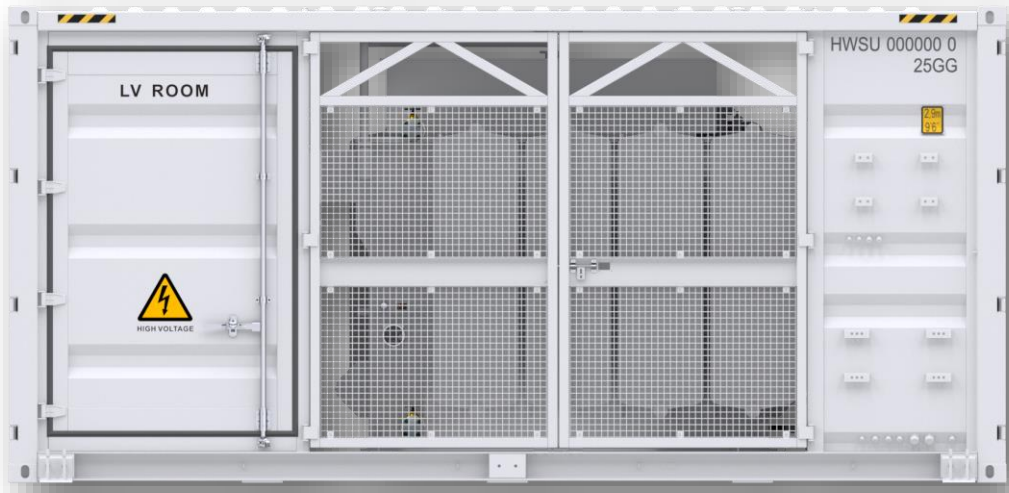
3 - Extra expense needed for optional features which standard product doesn't contain, more options upon request.

4 -When ambient temperature ≥55°C, awning shall be equipped for STS on site by customer.

5- For higher operating altitude, pls consult with Huawei.

# JUPITER-3000K-H1

## Smart Transformer Station



**Simple**

Prefabricated and Pre-tested, No Internal Cabling Needed Onsite  
Compact 20' HC Container Design for Easy Transportation



**Efficient**

High Efficiency Transformer for Higher Yields  
Lower Self-consumption for Higher Yields



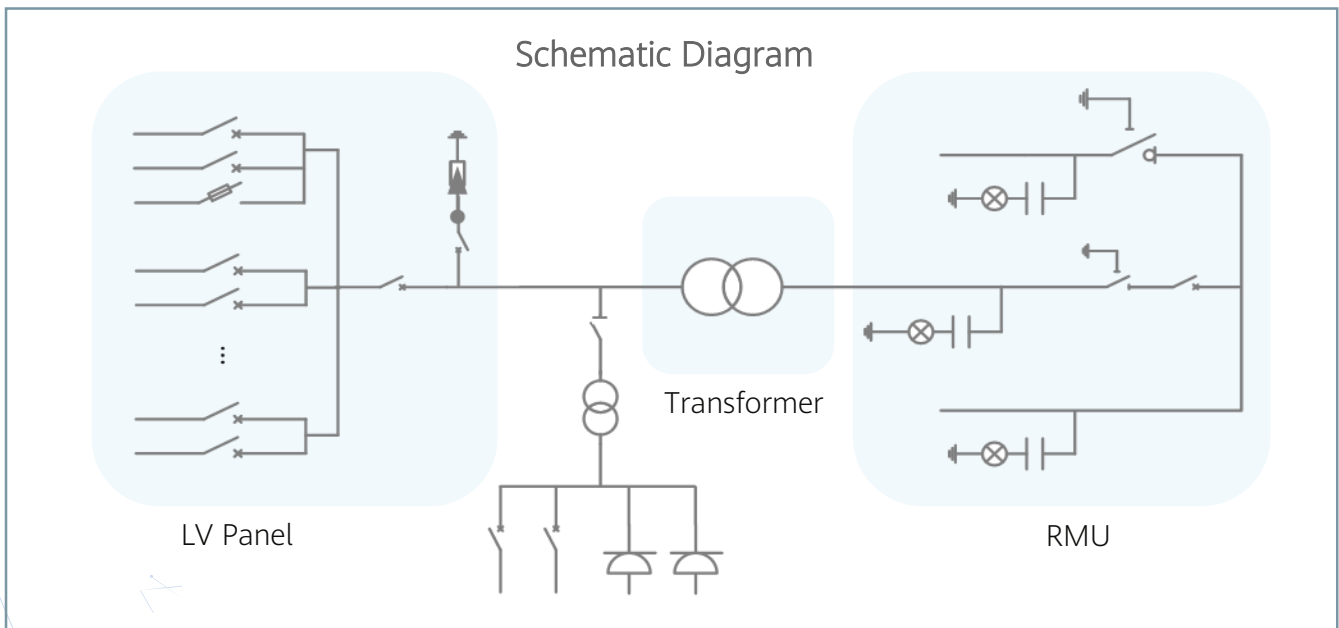
**Smart**

Real-time Monitoring of Transformer, LV Panel and RMU  
High Precision Sensor of LV Electricity Parameters  
Remote Control of ACB and MV Circuit Breaker



**Reliable**

Robust Design against Harsh Environments  
Optimal Cooling Design for High Availability and Easy O&M  
Comprehensive Tests from Components, Device to Solution



# JUPITER-3000K-H1

## Technical Specifications

Input		
Available Inverters / PCS	SUN2000-330KTL-H1 / SUN2000-330KTL-H2	
Maximum LV AC Inputs	11	
AC Power	3,300 kVA @40°C / 3,025 kVA @50°C <sup>1</sup>	
Rated Input Voltage	800 V	
LV Main Switches	ACB (2,900 A / 800 V / 3P, 1 x 1 pcs), MCCB (400 A / 800 V / 3P, 11 pcs)	
Output		
Rated Output Voltage	10 kV, 11 kV, 13.2 kV, 15 kV, 20 kV, 22 kV, 23±10% kV, 30 kV, 33 kV, 34.5 kV, 35 kV <sup>2</sup>	13.8 kV, 33 kV, 34.5 kV <sup>2</sup>
Frequency	50 Hz	60 Hz
Transformer Type	Oil-immersed, Conservator Type	
Transformer Cooling Type	ONAN	
Transformer Tappings	± 2 x 2.5%	
Transformer Oil Type	Mineral Oil (PCB Free)	
Transformer Vector Group	Dy11	
Transformer Min. Peak Efficiency Index	In Accordance with EN 50588-1	
RMU Type	SF <sub>6</sub> Gas Insulated	
RMU Transformer Protection Unit	MV Vacuum Circuit Breaker Unit	
RMU Cable Incoming / Outgoing Unit	Direct Cable Unit or Cable Load Break Switch Unit	
Auxiliary Transformer	Dry Type Transformer, 5 kVA, Single-phase, li0	
Output Voltage of Auxiliary Transformer	230 / 127 Vac	
Protection		
Transformer Monitoring & Protection	Oil Level, Oil Temperature, Oil Pressure and Buchholz	
Protection Degree of MV & LV Room	IP 54	
Internal Arcing Fault Classification of STS	IAC A 20 kA 1s	
MV Relay Protection	50/51, 50N/51N	
LV Overvoltage Protection	Type I+II	
Anti-rodent Protection	C5-Medium in accordance with ISO 12944	
Features		
2 kVA UPS	Optional <sup>3</sup>	
MV Surge Arrester for Transformer	Optional <sup>3</sup>	
General		
Dimensions (W x H x D)	6,058 x 2,896 x 2,438 mm (20' HC Container)	
Weight	< 15 t	
Operating Temperature Range	-25°C ~ 60°C <sup>4</sup> (-13°F ~ 140°F)	
Relative Humidity	0% ~ 95%	
Max. Operating Altitude	1,000 m <sup>5</sup>	
MV-LV AC Connections	Prewired and Pretested, No Internal Cabling Onsite	
LV & MV Room Cooling	Smart Cooling without Air-across for Higher Availability	
Communication	Modbus-RTU, Preconfigured with Smartlogger3000B	
Applicable Standards	IEC 62271-202, EN 50588-1, IEC 60076, IEC 62271-200, IEC 61439-1	

1 - More detailed AC power of STS, please refer to the de-rating curve.

2 - Rated output voltage from 10 kV to 35 kV, more available upon request.

3 - Extra expense needed for optional features which standard product doesn't contain, more options upon request.

4 -When ambient temperature ≥25°C, awning shall be equipped for STS on site by customer.

5- For higher operating altitude, pls consult with Huawei.